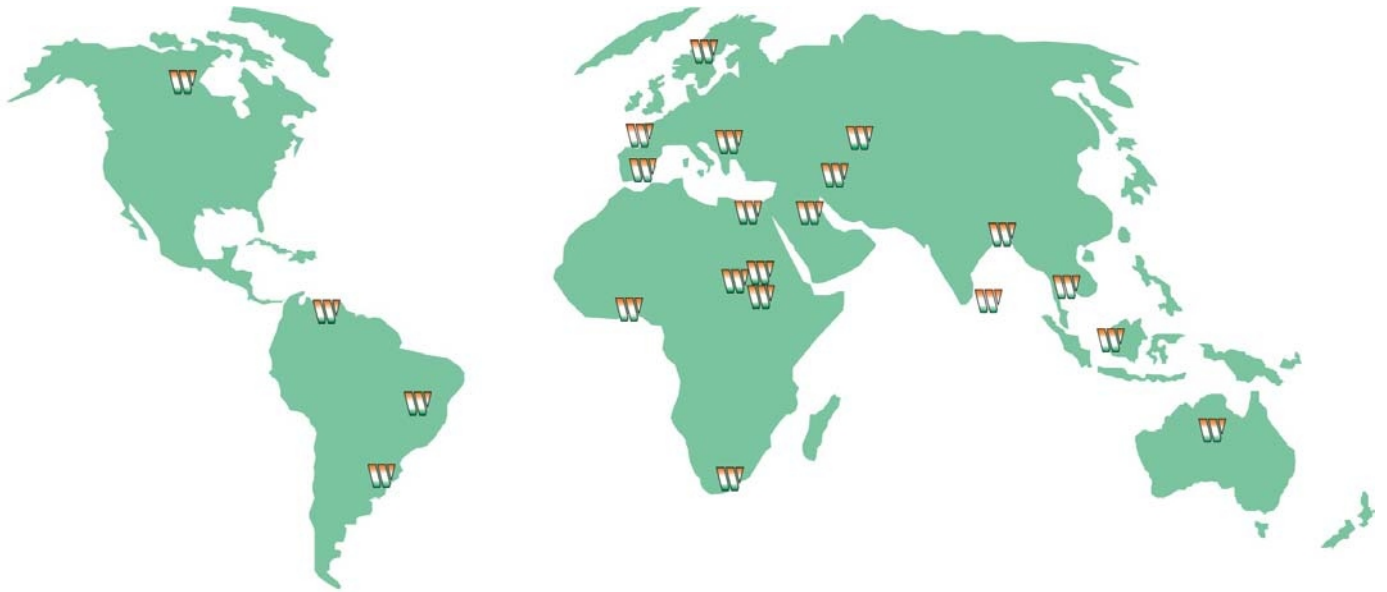








# TAKAI ISHIKI

## KNIFE AND SAW COMPANY

### PRODUCTS CATALOGUE



### Our Products are Exported to...

- |   |  |   |
|---|--|---|
|  U.S.A.    |  U.K.         |  AUSTRALIA       |
|  SPAIN     |  ITALY        |  SINGAPORE       |
|  VENEZUELA |  GERMANY      |  MALAYSIA        |
|  BRAZIL    |  HOLLAND      |  SRILANKA        |
|  ARGENTINA |  SOUTH AFRICA |  MYANMAR (BURMA) |
|  UGANDA    |  EGYPT        |  BANGLADESH      |
|  TANZANIA  |  U.A.E.       |  INDONESIA       |
|  IRAN      |  SAUDI ARABIA |  YEMEN           |
|  NIGERIA   |  KENYA        |  THAILAND        |



# TAKAI ISHIKI KNIFE AND SAW COMPANY

## KNIVES FOR TYRE INDUSTRIES



- BIAS CUTTERS
- SCORE SLITTER KNIVES
- VENT TRIMMING KNIVES
- AUTO SKIVER KNIVES
- STEEL CORD BLADE
- MILL KNIVES

**Products Catalogue**

**Product Type**

**Banner Bias Cutting Knives**

**Application**

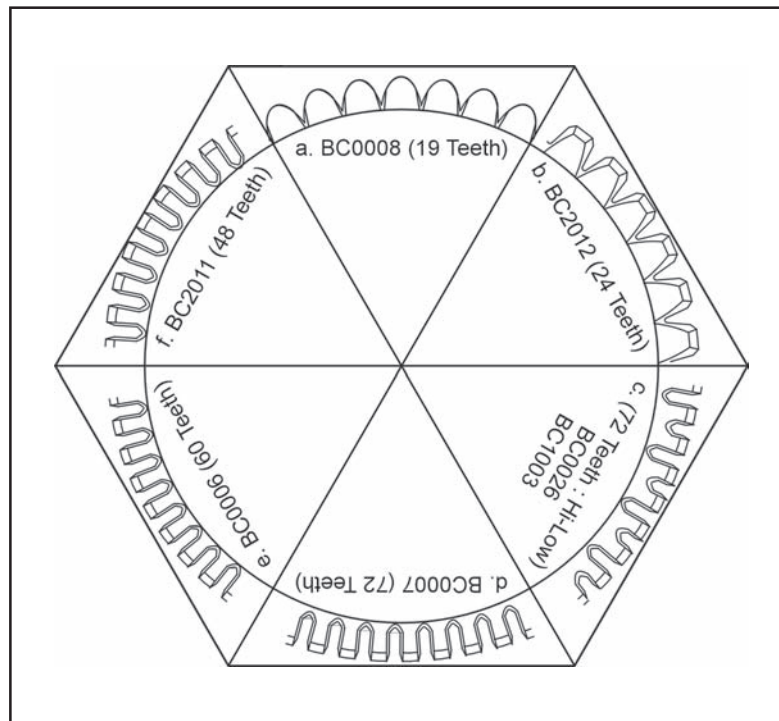
Specially used in manufacturing Automobile Tyres, Truck tyres, etc. for cutting Rubber Sheets.

**Standard**

Our Code	OD	ID	Thick	Teeth
BC0008	94	19	0.9	19
BC0008	3.3/4"	3/4"	1/27"	19
BC0007	94	19	0.9	72
BC0007	3.3/4"	3/4"	1/27"	72
BC0026	98	25.4	1 mm	72
BC1003	105	19	1 mm	72
BC0006	95	19	0.9	60
BC0006	3.5/8"	3/4"	1/27"	60
BC2011	95	19	0.9	48
BC2011	3.5/8"	3/4"	1/27"	48
BC0004	95	19	1.0	30
BC0135	3.5/8"	19	0.9	30
BC2012	95	19	1.0	24

(Hi-Low) Tooth Profile  
(Hi-Low) Tooth Profile

**Typical Teeth Profile of various Bias Knives**



**Material**

AISI - D2(HCHCr) / AISI - M2 (HSS)

Also available as per customer's specific requirements. Provide your Drawings, Sample or Sketch

M: +91 9869539577 | E: takai.ishiki.knife@gmail.com

**A WORLD OF EXPERIENCE IN CUTTING TOOLS**

**Products Catalogue**

**Product Type**

**Scoring Slitter Blades/Crush Cutter/Cameron Type Slitter**

**Application**

Generally used for slitting/scoring the fabric in tyre industries. Also used in paper converting, Film slitting and many other application. Suitable for machines like Cameron/Arrow/Ashton/Dusenbery/Johnstone & Others.

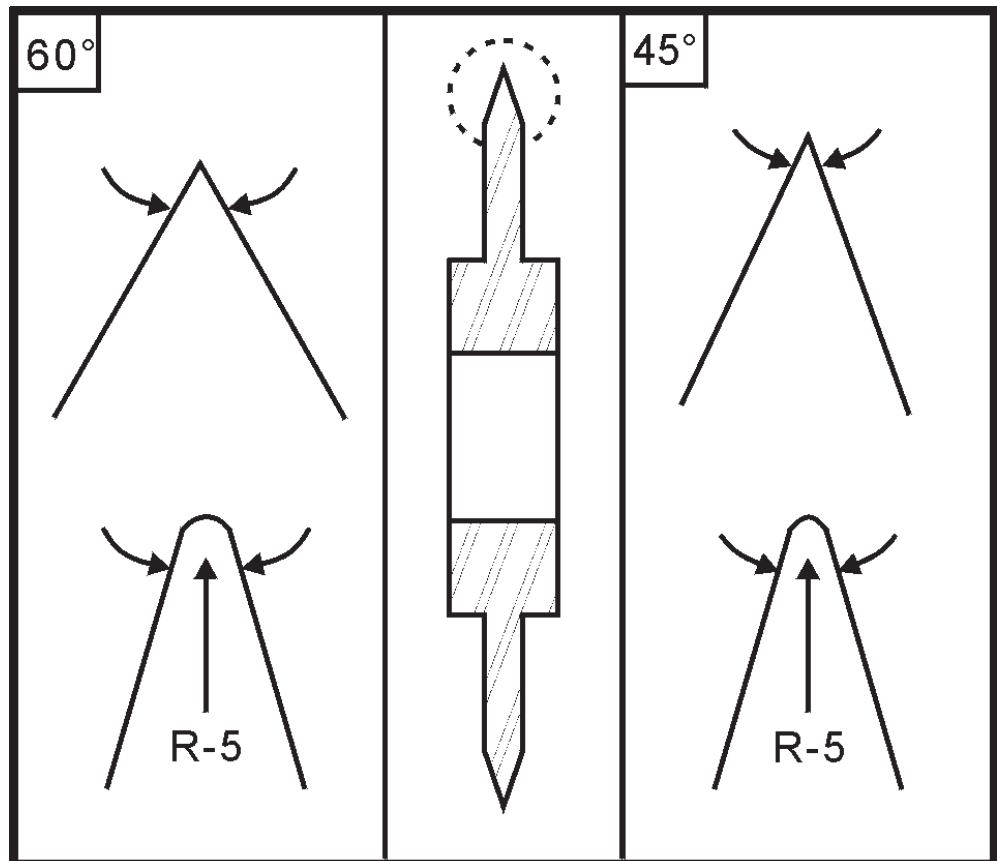
**Other Accessories**

Pneumatic holder also available for score slitters. Send your sample or sketch.

**Standard**

Our Code	OD	ID	Thick	HUBØ
CR0059	75	19	6.35	45
CR0583	76.2	19	5.50	60
CR0023	76	22	6.35	45
CR0020	3"	3/4"	1/4"	
CR0021	3"	7/8"	1/4"	
CR0180	3"	19	1/8"	46

**Various Slitters/  
 Scorers/Crushers with  
 cutting Angles &  
 degree.**



**Material**

SAE 52100/ AISI D2. Also available in HSS.

Also available as per customer's specific requirements. Provide your Drawings, Sample or Sketch

M: +91 9869539577 | E: takai.ishiki.knife@gmail.com

**A WORLD OF EXPERIENCE IN CUTTING TOOLS**



**Products Catalogue**

**Product Type**

**Top Cutter / Male Knives**

**Application**

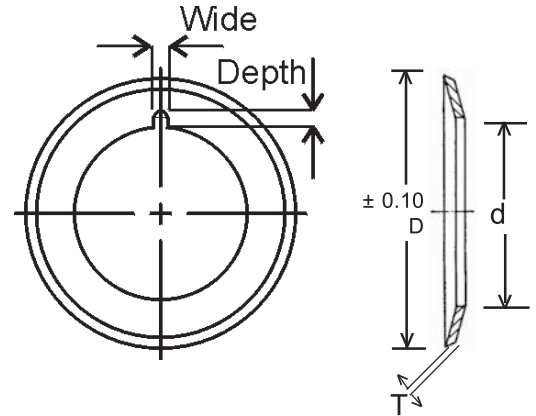
Slitting of Paper, Film, Aluminium Foil, Rubber, Leather Cloth, etc.

**Standard**

The standard sizes shown in both the above tables are in millimeters. Other sizes, in Inches, can be produced or offered on request.

**Top Knives - Plain Bore**

D	d	Wide	Depth	Thickness	
				T1	T2
100	70	2.5	3	1.0	1.2
130	80	3.5	3.5	1.5	
130	100	3.6	4	1.5	



**Material**

SAE 52100 / AISI - D2. Also available in H.S.S.

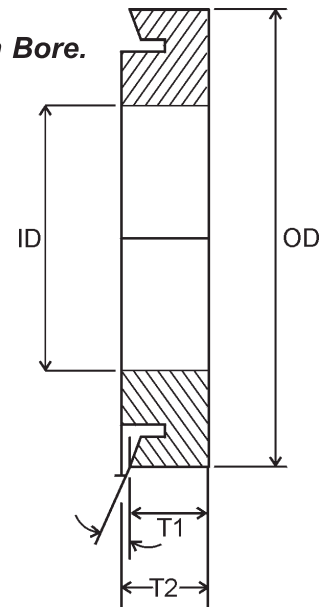
**Product Type**

**Bottom Cutters / Female Knives**

**Standard**

**Bottom Shear Knives / Female Knives with Plain Bore.**

Our Code	OD	ID	Thickness	
			T1	T2
BO0127	80	60	3.5	5
BO0015	80	60	8	10
BO1512	105	90	8	10



**Material**

SAE 52100 / AISI D2 or as per your requirements.

Also available as per customer's specific requirements. Provide your Drawings, Sample or Sketch

M: +91 9869539577 | E: takai.ishiki.knife@gmail.com

**A WORLD OF EXPERIENCE IN CUTTING TOOLS**

**Products Catalogue**

**Product Type**

**Vent Trimming Blades**

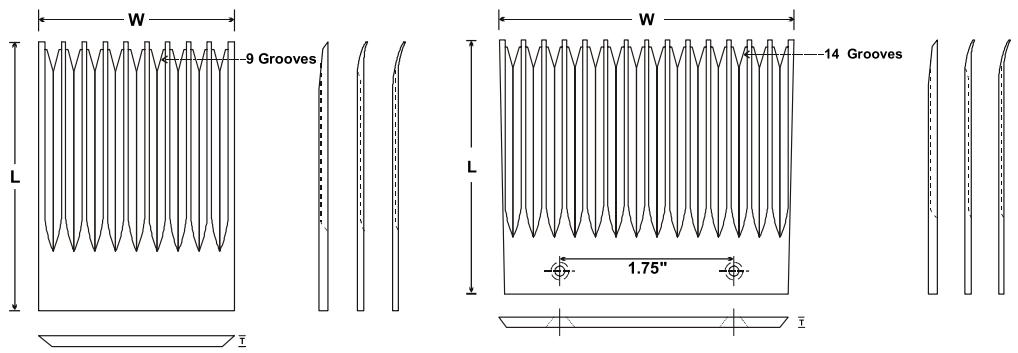
**Application**

Used exclusively in tyre manufacturing industry and tyre remoulding industries to trim the vents on the fabricated tyres after it comes out of moulding.

**Standard**

Our Code	L	W	T	No. of Grooves
VT001	1.7/8"	2"	0.083"	9
VT007	47 mm	50 mm	2.1 mm	9
VT0012	3"	2"	0.083"	14
VT0013	75	50	2.0	14

*Typical line sketches of various Vent Trimming Knives used in Tyre Manufacturing Industries*



**Material**

AISI - D2. Also available in HSS

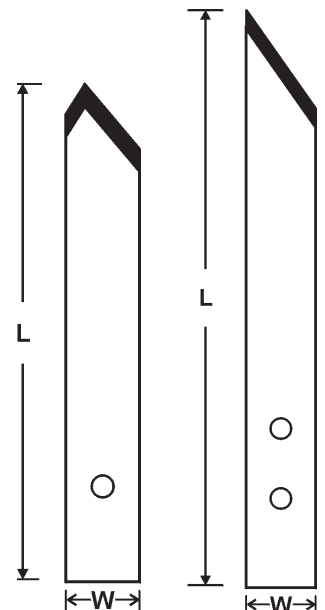
**Product Type**

**Mill Knives**

**Standard**

L	W	T
6"	1"	1/8"
6"	1"	1/4"
8"	1"	1/8"
8"	1"	1/4"
152	25	3
152	25	6
200	25	3
200	25	6
200	35	15
200	40	3.0

With or without holes.



**Material**

AISI - D2. Also available in HSS

Also available as per customer's specific requirements. Provide your Drawings, Sample or Sketch

M: +91 9869539577 | E: takai.ishiki.knife@gmail.com

**Products Catalogue**

**Product Type**

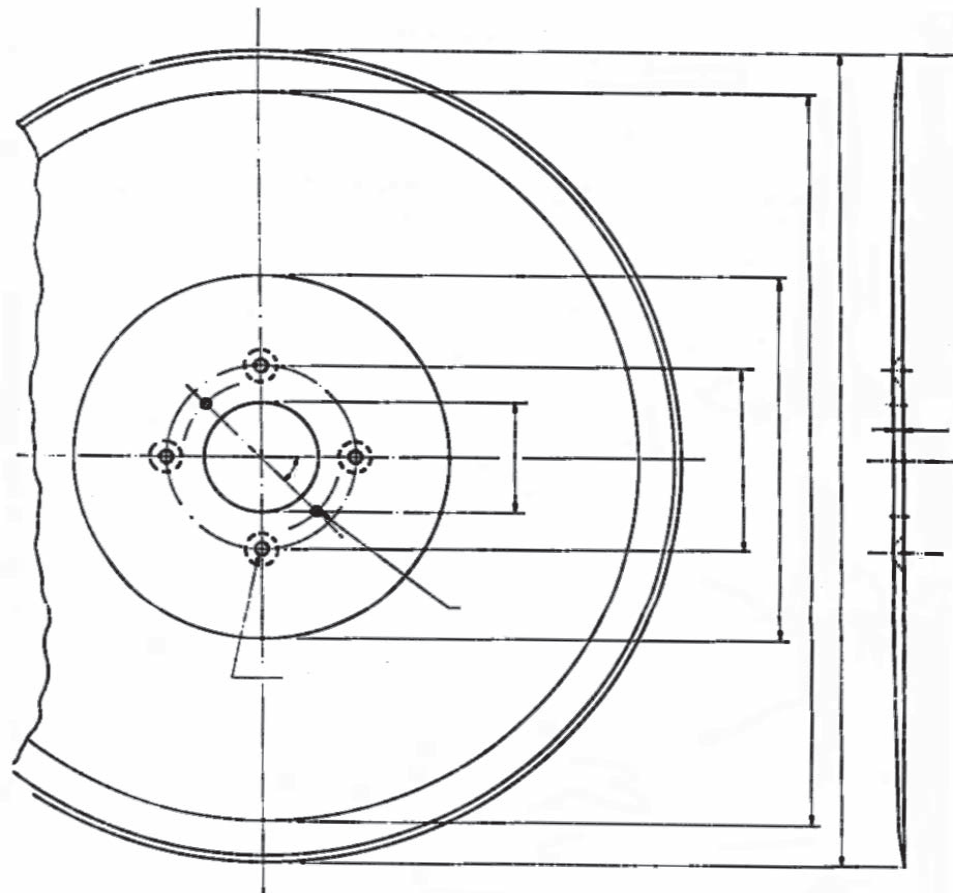
**Spadone Tread Knives / Auto Skiver Blades**

**Application**

Used in cutting Rubber in Tyre manufacturing Industries on auto skiver machines.

**Standard**

Our Code	OD	ID	Thick
AT5012	20"	2.75"	0.25"
AT5005	20"	2.75"	4.5 mm
AT5004	505 mm	70	6 mm
AT 6001	600 mm	35	1/4"
AT 2001	10"	5/8"	3/32"
AT4003	400	50	5 mm
AT 4001	17"	60	0.15"
AT 4002	17"	2.5"	0.15"



**Material**

AISI - D2. Also available in HSS

Also available as per customer's specific requirements. Provide your Drawings, Sample or Sketch

M: +91 9869539577 | E: takai.ishiki.knife@gmail.com

**A WORLD OF EXPERIENCE IN CUTTING TOOLS**

## Products Catalogue

**Product Type**

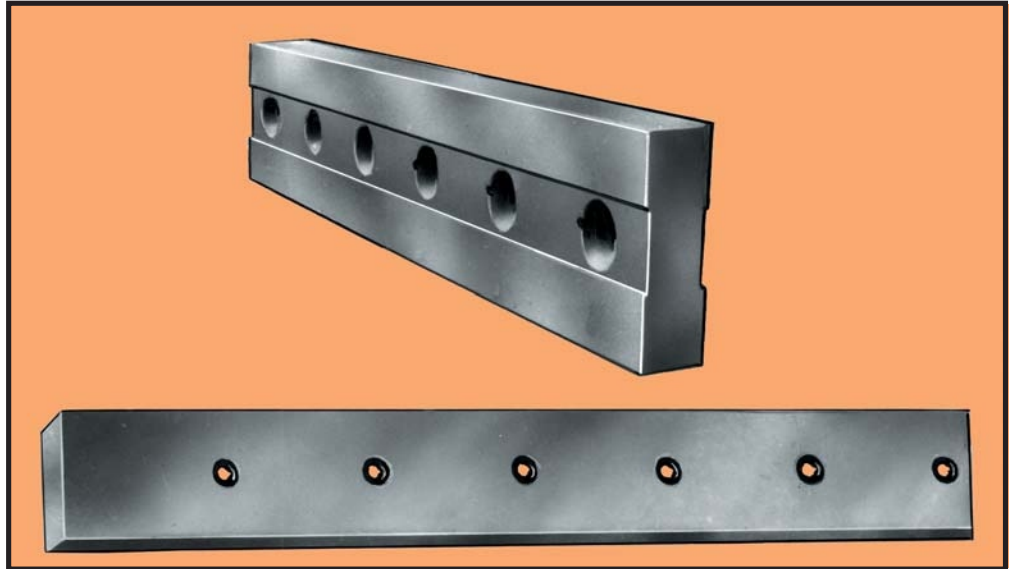
### Steel Cord Blade

**Application**

For cutting steel Reinforced Rubber generally used in Radial Tyre Plant.

**Standard**

Size upto 4 Mtr. long.



**Material**

AISI-D2 or carbide inserted as per drawing.

**Product Type**

### Other Knives

Any other Knives which are not shown here like Band Building Knives, Calender Knives, other types of slitting knives, etc. are also available or can be produced as per the drawing / specifications / samples of the customer.



# TAKAI ISHIKI

## KNIFE AND SAW COMPANY

### KNIVES FOR CONVERTING INDUSTRIES



- TOP CUTTERS / HOLDERS
- BOTTOM CUTTERS
- CIRCULAR SLITTERS
- PAPER CUTTING KNIVES
- SHEET CUTTING KNIVES
- WEB PRESS SERRATED KNIVES



**Products Catalogue**

**Product Type**

**Application**

**Standard**

The standard sizes shown in both the above tables are in millimeters. Other sizes, in Inches, can be produced or offered on request.

**Top Cutter / Male Knives**

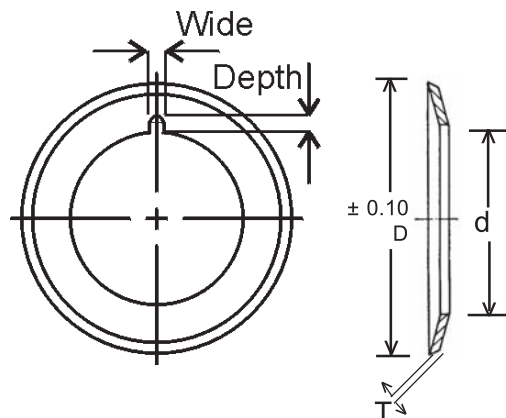
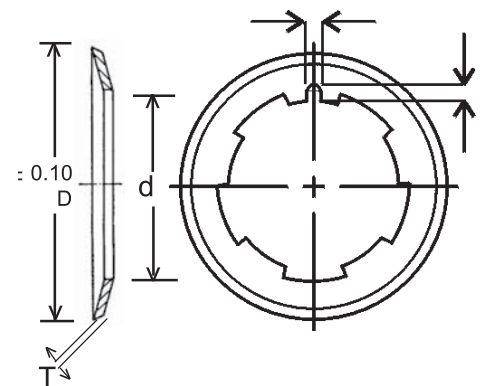
Slitting of Paper, Film, Aluminium Foil, Rubber, Leather Cloth, etc.

**Top Knives - Plain Bore**

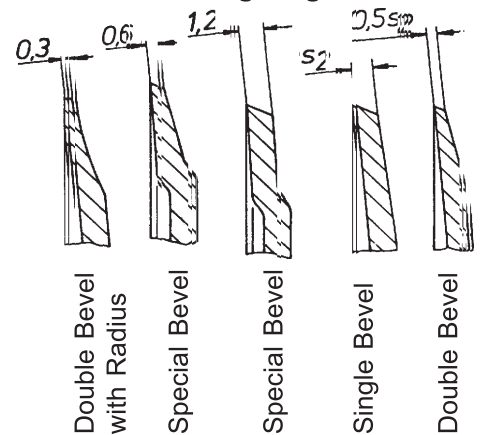
D	d	Wide	Depth	Thickness			
				T1	T2	T3	T4
62	40	2.5	3	0.6	0.8	1.0	1.2
65	40	4.0	3	0.8	1.0		
68	40	2.5	3	1.0	1.2		
68	45	3	3	1.0	1.2		
75	50	3/16	3/16	1.0	1.2		
89	60	3	3.5	0.8	1.0	1.2	
90	60	3	5	1.0	1.2		
100	70	2.5	3	1.0	1.2		
105	65	4	5	0.8	1.0	1.2	
105	70	3	4	0.8	1.0	1.2	
105	75	3.5	4	0.8	1.0	1.2	
108	65	4	5	1.0	1.2		
108	75	4	5	1.0	1.2		
110	65	4	4	1.0	1.2		
110	70	4	4	1.0	1.2		
110	75	4	4	1.0	1.2		
130	80	3.5	3.5	1.5			
130	100	3.6	4	1.5			
200	65	20		2.0	3.5	3.0	

**Top Knives - Bayonet Bore**

D	d	Wide	Depth	Thickness		
				T1	T2	T3
64	38	2.5	3.0	1.0	1.2	
68	40	2.5	3.0	0.6	1.0	
75	40	3.0	3.0	1.2		
89	55	4.0	5.0	0.8	1.0	1.2
90	55	4.0	4.0	1.2		
100	65	4.0	4.0	0.8	1.0	1.2
105	65	4.0	4.0	0.8	1.0	1.2
108	65	4.0	4.0	1.0	1.2	
130	80	4.0	4.0	1.0	1.5	
140	80	4.5	5.0	1.5		
150	90	4.5	5.0	1.5		



**Various Cutting Angles**



**Material**

SAE 52100 / AISI - D2. Also available in H.S.S.

Also available as per customer's specific requirements. Provide your Drawings, Sample or Sketch

M: +91 9869539577 | E: takai.ishiki.knife@gmail.com

**Products Catalogue**

**Product Type**

**Application**

**Standard**

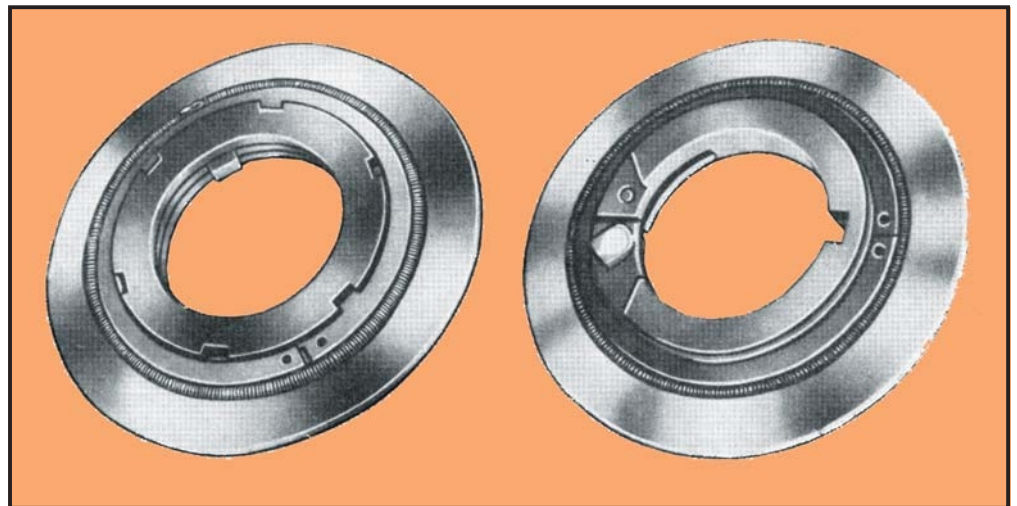
**Holders / Top Knives Adapter**

This is only as adapter to Top Cutters.

Available in different sizes to suit various locking arrangements.

Our Code	W	H	Thick.	Shaft Locking
HO0008	77	45	10 mm	with key
HO0011	77	35	10 mm	with key
HO0016	77	50.8	10 mm	with key
HO0002	85	60	15 mm	with ball bearing
HO0080	75	45	15 mm	with key
HO0059	90	60	15 mm	with ball bearing
HO0003	90	60	10 mm	with ball bearing
HO1002	112.5	80	20 mm	with key
HO0026	50	20	26.5 mm	with key
HO0024	56	30	25.0 mm	with key

With spring circlip and key, wherever required.



Also available with Ball Bearing Type self-locking arrangement.

Also available as per customer's specific requirements. Provide your Drawings, Sample or Sketch  
M: +91 9869539577 | E: takai.ishiki.knife@gmail.com

**Products Catalogue**

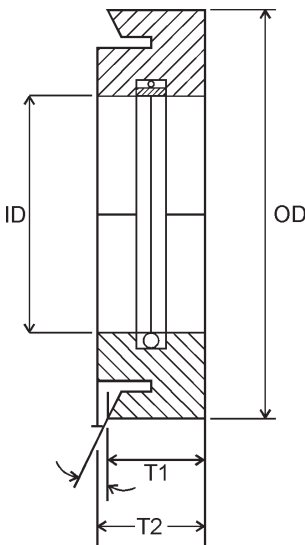
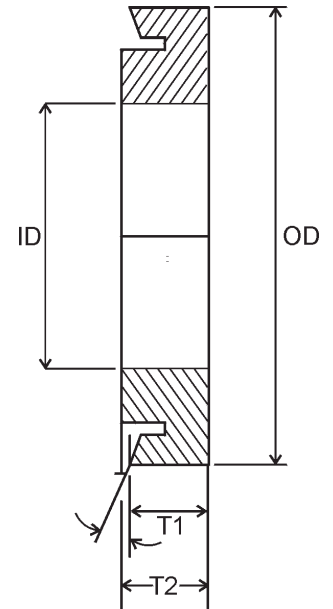
**Product Type**

**Bottom Cutters / Female Knives**

**Standard**

**Bottom Shear Knives / Female Knives with Plain Bore.**

Our Code	OD	ID	Thickness	
			T1	T2
BO0025	46	25	2.5	4
BO0029	60	40	4	6
BO0032	60	40	8	10
BO0010	75	45	4	6
BO0002	75	50	4	6
BO0053	77	60	8	10
BO0127	80	60	3.5	5
BO0015	80	60	8	10
BO0062	98	38	12	14
BO1020	180	50	25	
BO1007	200	145	25	

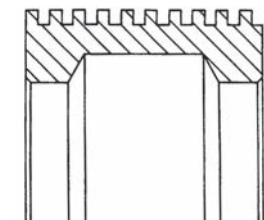


**Bottom Shear Knives / Female Knives with Self-locking Type. (with Ball Bearing Balls)**

Our Code	OD	ID	Thickness	
			T1	T2
BO0048	77	45	11.7	14.75
BO0068	77	45	13	15
BO0015	80	60	8	10
BO1512	105	90	8	10
BO1015	108	50.8	10	12.65

**Multi Block Bottom Shear Knives**

- Size 1 160 Ø
  - Size 2 180 Ø
  - Size 3 200 Ø
- } With 5 Grooves  
or 10 Grooves



**Material**

SAE 52100 / AISI D2 or as per your requirements.

Also available as per customer's specific requirements. Provide your Drawings, Sample or Sketch

M: +91 9869539577 | E: takai.ishiki.knife@gmail.com

**A WORLD OF EXPERIENCE IN CUTTING TOOLS**

**Products Catalogue**

**Product Type**

**Circular Knives**

**Application**

Wudtools offers a complete range of Circular Knives for varied applications industry wise. Hundreds of sizes, many from stock. Our range starts from 25 mm Ø to 500 mm Ø (1" Ø to 20" Ø) in various forms, various cutting angles, with or without perforations.

Paper • Packing • Textiles • Plastic • Rubber • Film • Food Processing  
• Cement Sheets, etc.

**Standard**

Our Code	OD	ID	Thickness
CR0015	3"	1"	1.2 mm
CR0015	75	25	1.0 mm
CR0069	80	40	1.0 mm
CR1030	4"	1"	1.2 mm
CR1050	100	25	1.0 mm
CR1004	125	25	2.0 mm
CR5006	150	30	2.0 mm
CR2014	200	40	2.4 mm
CR2019	200	40	3.5 mm
CR2018	200	65	2.0 mm
CR3003	300	90	2.0 mm



**Material**

SAE 52100 / AISI - D2 / AISI - M2 / Stainless Steel / Tungsten Carbide.

Also available as per customer's specific requirements. Provide your Drawings, Sample or Sketch

M: +91 9869539577 | E: takai.ishiki.knife@gmail.com

**A WORLD OF EXPERIENCE IN CUTTING TOOLS**

## Products Catalogue

**Product Type**

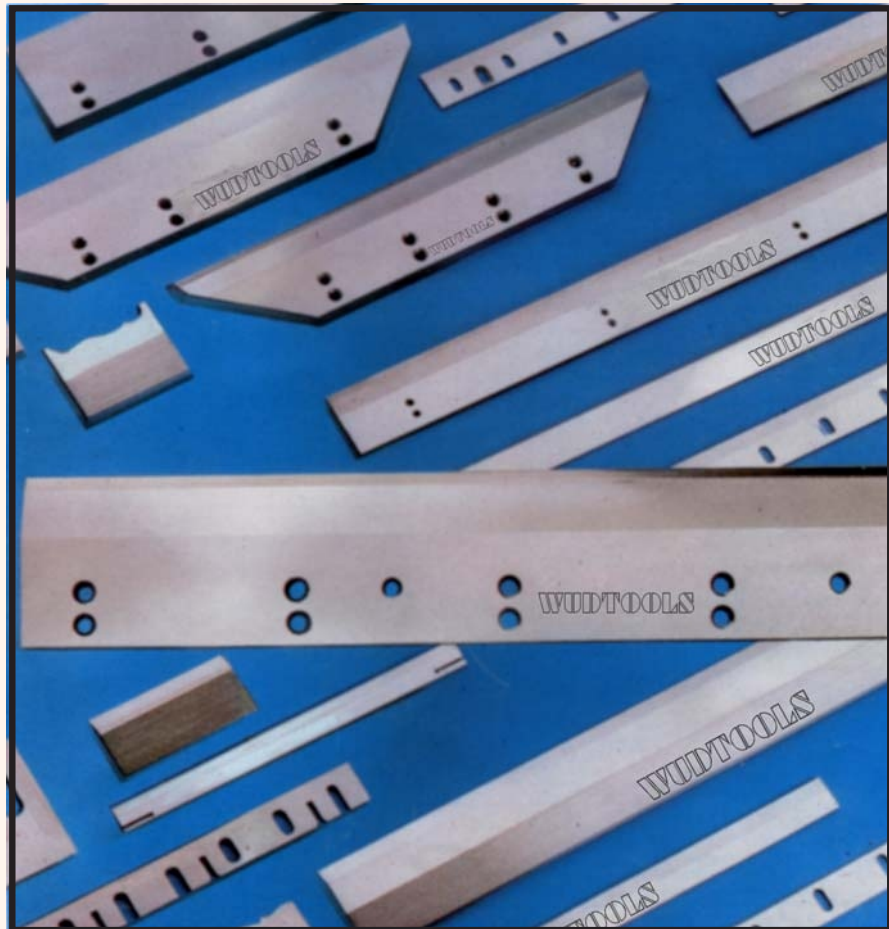
**Application**

**Standard**

### Paper Cutting Knives

For all automatic machines for extremely fine finish

As per the machines and their different models, our knives are ordered as replacement on various machines like Atlas, Como, Harris, Maxima, Perfecta, Polar, Muller-Martini, Wohlenberg, etc.



#### Various knives

- |                    |                   |
|--------------------|-------------------|
| ⌘ Paper Cutting    | ⌘ Three knife set |
| ⌘ Trimmer Knives   | ⌘ Sheeter Knives  |
| ⌘ Packaging Knives |                   |

**Material**

High Carbon Steel / AISI - D2 / HSS-inlay / TC-inlaid.

Also available as per customer's specific requirements. Provide your Drawings, Sample or Sketch  
M: +91 9869539577 | E: takai.ishiki.knife@gmail.com

***A WORLD OF EXPERIENCE IN CUTTING TOOLS***



**Products Catalogue**

**Product Type**

**Sheet Cutters**

**Application**

Generally used in the Paper Mills for cut-to-length Paper Sheets. Wudtools range starts from 500 mm (20") to 4000 mm (160") with various types of cutting Angles.

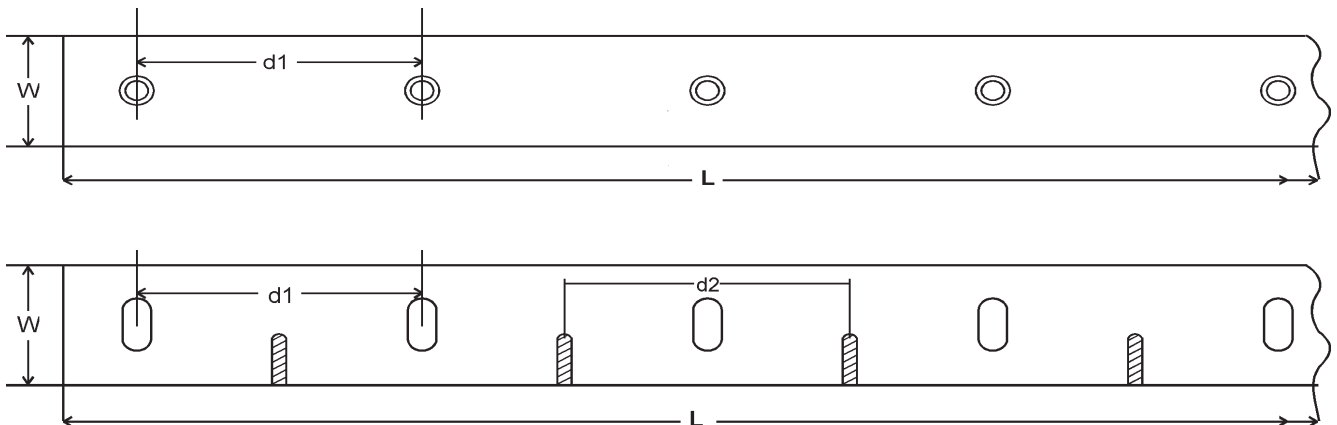
**Standard**

We have capacity to produce sheet cutter upto 4 meters in length.

Depending upon the requirement of the customer, to their drawing, this is manufactured.

**Material**

AISI - D2



Also available as per customer's specific requirements. Provide your Drawings, Sample or Sketch  
M: +91 9869539577 | E: takai.ishiki.knife@gmail.com

**A WORLD OF EXPERIENCE IN CUTTING TOOLS**

## Products Catalogue

### Product Type

### High Quality Web Press Serrated Cut-off Knives for every Machine

Wudtools worldwide, provides web press serrated edge cut-off knives. You name it, we can provide it. Whether your press is domestic or foreign built, you can always count on us for availability, fast response, and performance.



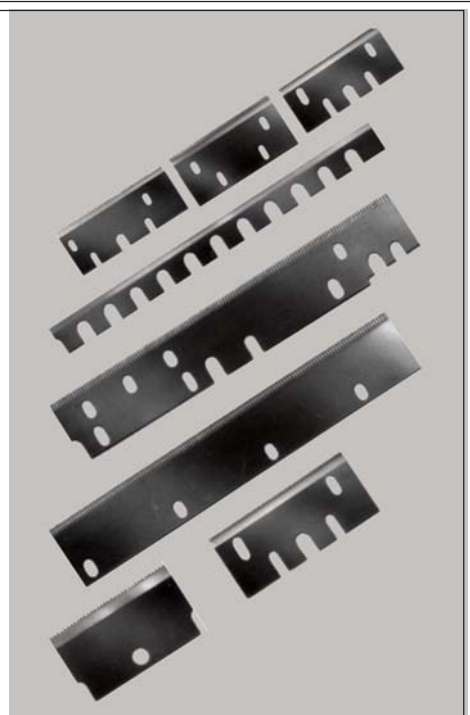
### Standard

- ② Machined and precision ground to OEM specifications.
- ② From ground tooth profiles assure consistent size and burr-free cutting edges.
- ② Tooth forms in Rip Saws, V-Tooth and Herringbone styles serrated and bevelled, on one or both sides.
- ② Over 40 types in 8, 10, 12 and 16 teeth per inch.
- ② Custom designs manufactured to order.

Also included in our programme are :

- ② Standard or Split Perforators
- ② Rotary cut-off Blades

- ② ATF
- ② Baker Perkins
- ② Butler
- ② Cerutti
- ② Hantscho
- ② Harris
- ② Miehle-Goss
- ② Motter
- ② Toshiba
- ② Wood-Hoe, and others.
- ② Custom-Built



Special sizes and custom knives are made to your specifications. Firm prices and prompt deliveries are offered by us.

Also available as per customer's specific requirements. Provide your Drawings, Sample or Sketch  
M: +91 9869539577 | E: takai.ishiki.knife@gmail.com

**A WORLD OF EXPERIENCE IN CUTTING TOOLS**

**Products Catalogue**

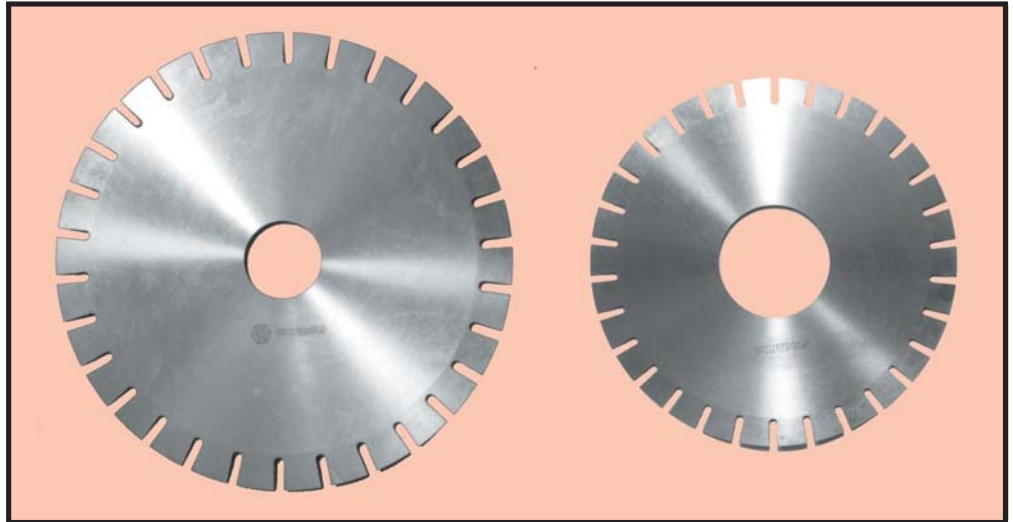
**Product Type**

**Asbestos Cutting Knives of Steel**

**Application**

Wet Asbestos Cement Sheet cutting.

We are one of the pioneers in traditional Alloy steel knives for wet Asbestos Cement Sheet cutting. We can offer the same in HSS and High Carbon high Chromium Steel (C = 2.1, Cr = 12%).



**Standard**

Following are some of the common sizes but we can make any size required.

Our Code	Sizes of Circular Knives for Asbestos Sheet Industries
CR2056	250 od x 50 id x 3 mm thick x 30 teeth
CR2061	250 od x 60 id x 2 mm thick x 30 teeth
CR3009	300 od x 30 id x 2 mm thick x 30 teeth
CR3038	300 od x 30 id x 3 mm thick x 24 teeth
CR3010	300 od x 35 id x 2 mm thick x 30 teeth
CR3011	300 od x 50 id x 2 mm thick x 30 teeth
CR3004	300 od x 55 id x 2 mm thick x 36 teeth
CR3003	300 od x 90 id x 2 mm thick x 30 teeth
CR3032	300 od x 90 id x 3 mm thick x 30 teeth
CR3045	300 od x 90 id x 2 mm thick (without teeth)

**Material**

AISI D2 (HCHCr) / AISI M2 (HSS)

Also available as per customer's specific requirements. Provide your Drawings, Sample or Sketch  
M: +91 9869539577 | E: takai.ishiki.knife@gmail.com

**Products Catalogue**

**Product Type**

**Asbestos Cutting Knives from Tungsten Carbide Segments**

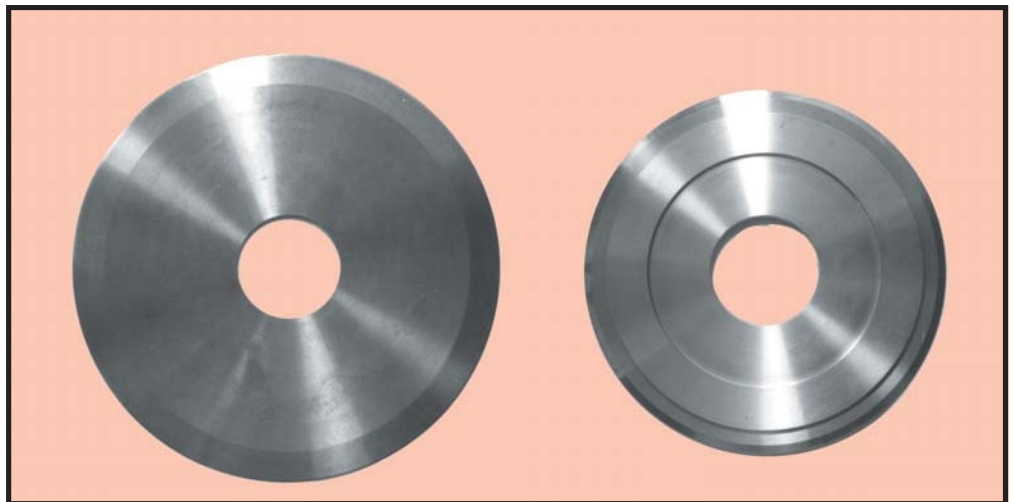
**Application**

Wudtools's 'Carbcut' Carbide Segmented Bevel Knives have been developed over a number of years and have an excellent and proven track record. The circular knife consists of a steel body plat fitted with bevel edge tungsten carbide segments - each segment being pinned for increased operating safety.

Wudtools's Hard Metal Division, recommend that the maximum operating speed as 4000 rpm, although each blade is test run at speeds of 6000 rpm prior to despatch.

'Carbcut' Carbide Knives are primarily designed for the cutting of asbestos and its substitute, a wet fibre cement, plus a wide range of other composite boards and panels.

Also in the new development made by our hard metal division now we can also offer you the complete ring configuration specially for wet fibre cement and composite boards. This will substitute the configuration of Carbide Segment with One Carbide Ring configuration.



**Standard**

Our Code	Sizes of Asbestos Sheet Cutting Knives with Carbide Segments
	300 od x 50 id x 2.2/28mm thick x 18 segment
	300 od x 50 id x 2.2/28mm thick x 10 segment
	300 od x 50 id x 2.2/28mm thick x 1 ring

**Material**

Tungsten Carbide.

Also available as per customer's specific requirements. Provide your Drawings, Sample or Sketch  
M: +91 9869539577 | E: takai.ishiki.knife@gmail.com

## Products Catalogue

### Product Type

### Application

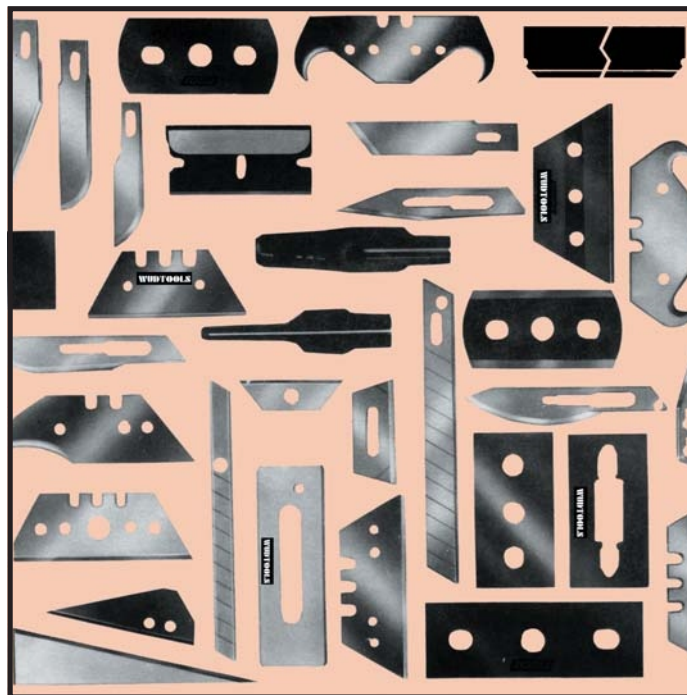
## Industrial & Utility Razor Knives

Wudtools provides various special blades and knives that find applications in hundreds of industries as well as in handicraft and utility gadgets.

Wudtools provides 'technical' blades for production, cutting and slitting of plastic films, rubber products, textiles, fibres, leather, glassware, cardboard, paper, web cut-off, packaging, pencil sharpeners, etc. However, we provide special blades for applications that fall outside the standard range.

Blades illustrated in this catalogue are produced with "hair cutting sharpness". You will find most of your applications in this catalogue and we will be happy provide them require your consolidated schedule of requirement for regular supplies.

Call on us with specific application, quantities and details of what you are using presently. We will try to give you your exact requirement or help you to choose from our nearest standards so that you can always procure them easily from us.



### Various Industrial Razor Knives :

- Three Hole Blades
- Oblong Hole Blade
- Vallet Blade
- Triangular Blade
- Snap of Blade
- Lummus - Mark IV
- Lummus - Mark V
- Glass Fibre Blade 197 mm long
- Glass Fibre Blade 137 mm long

Also available as per customer's specific requirements. Provide your Drawings, Sample or Sketch  
M: +91 9869539577 | E: takai.ishiki.knife@gmail.com

**A WORLD OF EXPERIENCE IN CUTTING TOOLS**

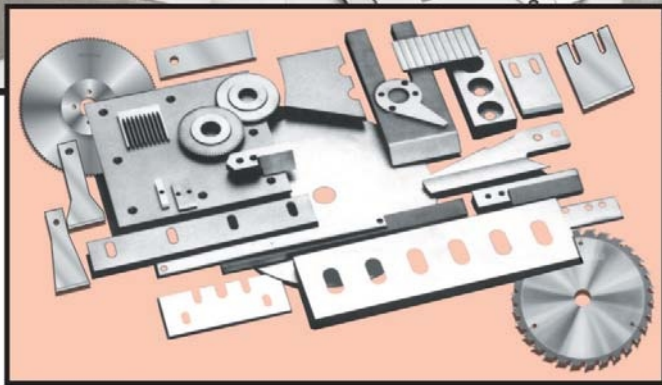




# TAKAI ISHIKI

## KNIFE AND SAW COMPANY

### KNIVES FOR RECYCLE INDUSTRIES



- GRANULATOR BLADES
- PALLETIZER BLADES
- ROTARY CUTTER
- SAWS - HSS & TCT
- OTHERS
  - SHEARING BLADES
  - PUNCHES & DIE

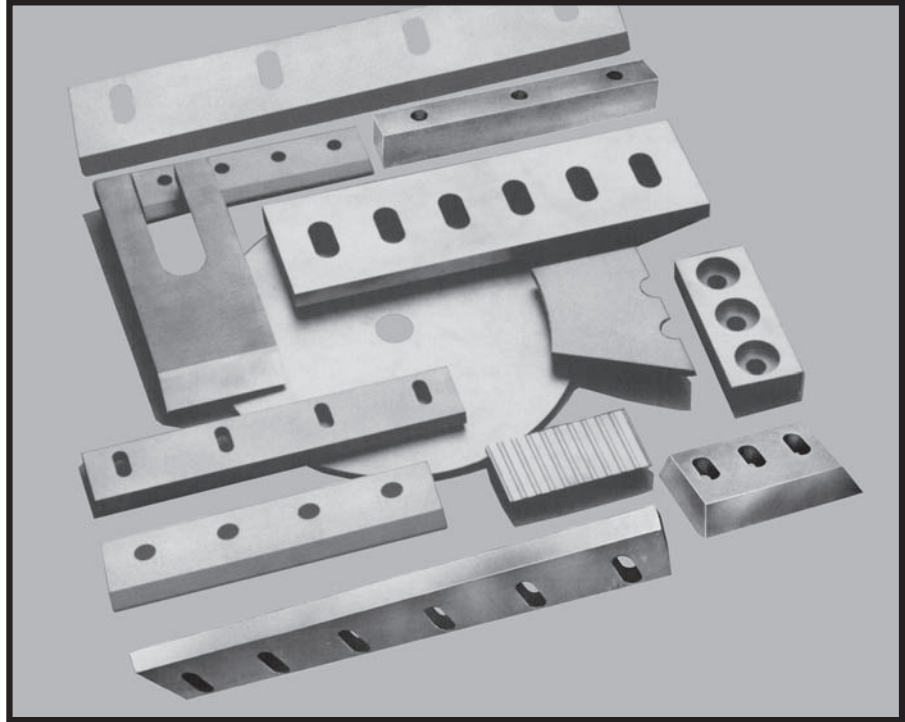
**Products Catalogue**

**Product Type**

**Granulator Blades**

**Application**

Recycling and Granulating of Plastics



**Material**

AISI D2 / AISI-D3 / Powder Metallurgy (Grades on request)

Replacement **Granulator Blades** for various machines as follows.

**A. Standards for Machine - Rapid**

Model	Per Set	Size	Holes
150	4 Fly 2 Dead	292mm x 65mm x 14mm 380mm x 49mm x 14mm	2 c/slots 2 THB
GK205	3 FLY 2 Dead	226 x 64 x 12mm 250mm x 38mm x 9.50mm	2 c/slots 3 THB
GK3026K	3 Fly 2 Dead	301mm x 73mm x 14mm 325mm x 75mm x 14mm	2 c/slots 2 c/slots 2 edged
GK4535	3 Fly 2 Dead	445mm x 97mm x 18mm 470mm x 82mm x 18mm	3 c/slots 3 c/slots 2 edged
GK6045	10 / 6 Fly 2 Dead	295mm x 84mm x 18mm 610mm x 80mm x 18mm	2 c/slots 3 c/slots 2 edged
GK640	10 / 6 Fly 2 Dead	296mm x 76mm x 14mm / 295 back 635mm x 47mm x 14mm	3 c/slots 7 THB
GK8045	6 Fly 2 Dead	390mm x 80mm x 20mm 802mm x 70mm x 20mm	3 c/slots 4 c/slots
GK2645	3 Fly 2 Dead	450mm x 73mm x 14mm 468mm x 73mm x 14mm	3 c/slots 3 c/slots 2 edged

Also available as per customer's specific requirements. Provide your Drawings, Sample or Sketch

M: +91 9869539577 | E: takai.ishiki.knife@gmail.com

**A WORLD OF EXPERIENCE IN CUTTING TOOLS**

**Products Catalogue**

Replacement **Granulator Blades** for various machines as follows.

**B. Standard for Machines - Burtonwood - U S I - Cumberland - Leeson**

Model	Per Set	Size	Holes
0	3 Fly 2 Dead	4½" x 1.7/16" x 3/8" 4½" x 2.1/8" x 1/2"	3 plain holes 3 c/slots
5/7	2 Fly 2 Dead	5.31/32" x 2.3/4" x 1/2" 5" x 2" x 1/2"	2 c/bored holes 2 c/slots
1/2	3 Fly 2 Dead	7½" x 1½" x 3/8" 7½" x 2.3/4" x 5/8"	4 plain holes 4 c/slots
7/10	2 Fly 2 Dead	10.23" x 2.812" x 1/2" 10.18" x 2.06" x 1/2"	3 c/bored holes 3 c/slots, 2 o/slots
2/84	3 Fly 2 Dead	12" x 2.3/4" x 1/2" 12¼" x 2.3/4" x 1/2"	4 c/sunk holes 4 c/slot 2 o/slot
10/12	3 Fly 2 Dead	12.1/32" x 2.11/16" x 1/2" 12¼" x 2.13/64" x 1/2"	4 c/bored holes 4 c/slots
4/84 - 14"	3 Fly 2 Dead	14.1/8" x 3¼ x 1/2" 16¼" x 2.3/4 x 1/2"	4 c/sunk holes 5 c/slot (4 edge)
4/84 - 16"	3 Fly 2 Dead	15.15/16 x 3¼ x 1/2" 16.3/16" x 2.3/4" x 1/2"	4 c/sunk holes 5 c/slot (4 edge)
6/84	3 Fly L/Hand 3 Fly R/Hand 4 Dead	334mm x 82mm x 13mm 334mm x 82mm x 13mm 334mm x 70mm x 13mm	3 c/sunk holes 3 c/sunk holes 4 c/slot (4 edge)
30	6 Fly 4 Dead	15.1/6" x 2.13/16" x 5/8" 15¼" x 3.13/16" x 7/8"	5 Holes 5 c/slots 2THB
12/16	3 Fly 2 Dead	16" x 3.225" x 1/2" 16.235" x 2.813" x 1/2"	4 c/sunk holes 5 c/slot 2 ½ slots
18	5 Fly 2 Dead	17.3/4" x 2" x 1/2" 18" x 3" x 5/8"	6 plain holes 6 c/slots 2THB
37	4 Fly 4 Dead	18½" x 2.13/16" x 3/4" 18.23/32" x 4.5/16" x 7/8"	5 plain holes 5 c/slots 2THB
37B	10 Fly 4 Dead	475mm x 110mm x 20mm 476 x 97 x 22mm	4 c/sunk holes 5 c/sunk 2THB
50B	10 Fly 4 Dead	19.312" x 4¼" x 3/4" 25.3/16" x 3.3/4" x 7/8"	4 c/sunk holes 6 c/slots 2THB
20	5 Fly 2 Dead	20" x 2.1/8" x 5/8" 20" x 3.3/8" x 7/8"	7 plain holes 7 c/bored slots
12/20	3 Fly 2 Dead	20" x 3¼" x 1/2" 20¼" x 2.13/16" x 1/2"	5 c/bored holes 7 c/slots 3 ½ slot
43	6 Fly 4 Dead	21.9/16" x 2.7/8" x 3/4" 21.3/4" x 3.13/16" x 7/8"	6 plain holes 6 c/slot 2THB
15/24	3 Fly 2 Dead	24" x 3.235" x 5/8" 24¼" x 3.312 x 5/8"	5 c/bored holes 7 c/slot 2THB
20/50	10 Fly 4 Dead	25" x 4.235" x 3/4" 25.3/16" x 3.3/4" x 7/8"	5 c/sunk holes 6 c/slots 2THB
18/28	5 Fly 2 Dead	28¼" x 4.5/16" x 3/4" 28.3/8" x 3.13/16" x 17mm	5 c/sunk holes 8 c/slots 3THB
56T	6 Fly 4 Dead	28½ x 3.5/16" x 17mm 28.15/16" x 2.3/4" x 5/8"	6 c/sunk holes 6 c/slot 2THB

Also available as per customer's specific requirements. Provide your Drawings, Sample or Sketch

M: +91 9869539577 | E: takai.ishiki.knife@gmail.com

## Products Catalogue

Replacement **Granulator Blades** for various machines as follows.

### C. Standard for Machine - Blackfriars

Model	Per Set	Size	Holes
Junior	3 Fly 2 Dead	4¼" x 2" x 3/8" 4¼" x 2" x 3/8"	2 c/bored 2 c/slots 2THB
6/8	4 Fly 3 Dead	7.15/16" x 2½" x 3/8" 8.3/8" x 2" x 3/8"	2 c/bored 2 THB
18 ASHD	6 Fly 2 Dead	8½" x 2.7/8" x 1.15/32" - 1.1/8" 17.3/8" x 5" x 15/16"	2 c/bored holes 6 c/slots 2THB
HD45	6 Fly 2 Dead	8¼" x 97mm x 15/16" 442mm x 115mm x 24mm	2 c/slots 6 c/slots 2THB
HD40/40	3 Fly 2 Dead	370mm x 86mm x 21mm 395mm x 86mm x 21mm	3 c/bored slot 2THB 5 c/bored slot 2THB
12	3 Fly 2 Dead	11.13/16" x 3" x 3/4" 12½" x 3.1/32" x 5/8"	3 c/bored holes 3 c/slots 2THB
62/52	6 Fly 4 Dead	300mm x 100mm x 21mm 306mm x 110mm x 22mm	3 c/slot 4 c/slot
HD67	9 Fly 2 Dead	8½" x 97mm x 15/16" 658mm x 115mm x 24mm	2 c/bored slot 9 c/bored slot 2THB
10/20	4 Fly 2 Dead	20" x 3.1/8" x 1/2" 20.3/8" x 2.5/8" x 1/2"	3 c/bored holes 2THB
12/24	4 Fly 6/4 Dead	22.7/8" x 4.15/16" x 5/8" 24" x 3" x 5/8"	6 c/bored holes 2 THB
15/26"	5/3 Fly 2 Dead	25" x 5" x 2/4" 25.7/8" x 4½" x 3/4"	4 c/bored holes 6 c/bored slot 2THB
27 ASHD	9 Fly 2 Dead	8½ x 2.7/8" x 1.15/32" - 1.1/8" 25.15/16" x 5" x 15/16"	2 c/bored holes 9 c/slots 2THB

### D. Standards for Machine - Falzoni

Model	Per Set	Size	Holes
1200 (F)	4 Blades	116mm	4 c/bored holes
1000	6 Fly	25mm x 115mm x 330mm	6 c/bored
800	2 Fly	20mm x 105mm x 255mm	6 holes
FB 6	3 Fly 2 Dead	596mm x 78mm x 24mm 598mm x 98mm x 24mm	6 c/slots 10 c/slots 2THB
FB 4 (mini 60)	5 Fly 2 Dead	396mm x 68mm x 19mm 330mm x 100mm x 24mm	5 plain holes 6 c/slots 2THB

Also available as per customer's specific requirements. Provide your Drawings, Sample or Sketch

M: +91 9869539577 | E: takai.ishiki.knife@gmail.com

**A WORLD OF EXPERIENCE IN CUTTING TOOLS**

**Products Catalogue**

Replacement **Granulator Blades** for various machines as follows.

**E. Standard for - Various Others Machines**

Make / Model	Per Set	Size	Holes
Costerelli (CJ)	2 Blades	390 x 125 x 10mm	5 holes
Costerelli 12-50	2 Outer 2 Inner	To Shape To Shape	4 Holes 5 Holes
Alpine 50/80	20 Fly 20 Dead	210mm x 90mm x 20mm 210mm x 28mm x 30mm	2 c/slots 2THB 3 tap holes 4 edges
Queen Bee	2 Blades 2 Blades	300mm x 120mm x 19mm 300mm x 120mm x 19mm	6 tap holes 6 c/bored slots
UPM- MGK - T	2 Fly 1 Fly 2 Dead	225mm x 64mm x 12mm 169mm x 64mm x 12mm 225mm x 61mm x 12mm	2 c/slots 2 c/slots 2 c/slots
Dreher SG 20	10 Fly 1 Dead	109mm x 58mm x 14mm 199mm x 55mm x 9mm	3 c/bored holes 3 c/bored slots
26/26	4 Fly 2 Dead	250mm x 60mm x 14mm 255mm x 57mm x 16mm	4 c/bored holes 4 c/slots
26/41	4 Fly 2 Dead	400mm x 57mm x 14mm 409mm x 57mm x 16mm	6 c/bored holes 6 c/slots
Silenator 912	2 Fly 1 Dead	11½" x 2.15/16" x 9/16" 11.13/16" x 2.7/16" x 9/16"	4 c/sunk holes 4 open slots
1116	2 Fly 1 Dead	15½" x 2.15/16" x 9/16" 15.7/8" x 2.15/16 x 9/16"	6 c/sunk holes 6 open slots
Conair Churchull 1420	3 Fly 2 Dead	508mm x 74mm x 26mm 511mm x 50mm x 12mm	3 c/bored holes 8 c/slots
CIMP	2 Fly 4 Dead	298mm x 57mm x 18mm 298mm x 130mm x 18mm	2 c/bored holes 3 c/slots 2 edges
Wortex	4 Fly 2 Dead	767mm x 75mm x 12.50mm 780mm x 80mm x 12.50mm	7 c/sunk holes c/slot 2 T slot
Tria	5 Fly 2 Dead	998mm x 100mm x 22mm 1005mm x 3.5/8" x 7/8"	2 Edges 5 THB
Herbold 45/100	10 Fly 2 Dead 2 Block	485mm x 100mm x 22mm 994mm x 100mm x 22mm 484mm x 100mm x 28mm	3 c/slots 4THB 8 c/slots 4THB 2 edge 4 o/slot 3THB 2 edge
45/30	9 Fly 2 Dead 1 Block	270mm x 100mm x 22mm 298mm x 80mm x 22mm 260mm x 30mm x 30mm	3 c/slot 3THB 3 c/slot 2 edge 2 T Hole 3 bor 2 edge
30/30	9 Fly 2 Dead 4 Block	270mm x 70mm x 16mm 290mm x 76mm x 16mm 260mm x 30mm x 30mm	2 c/slots 3THB 3 slot 2 edge 2 T hole 3 bor 2 edge

Also available as per customer's specific requirements. Provide your Drawings, Sample or Sketch  
M: +91 9869539577 | E: takai.ishiki.knife@gmail.com



**Products Catalogue**

**Product Type**

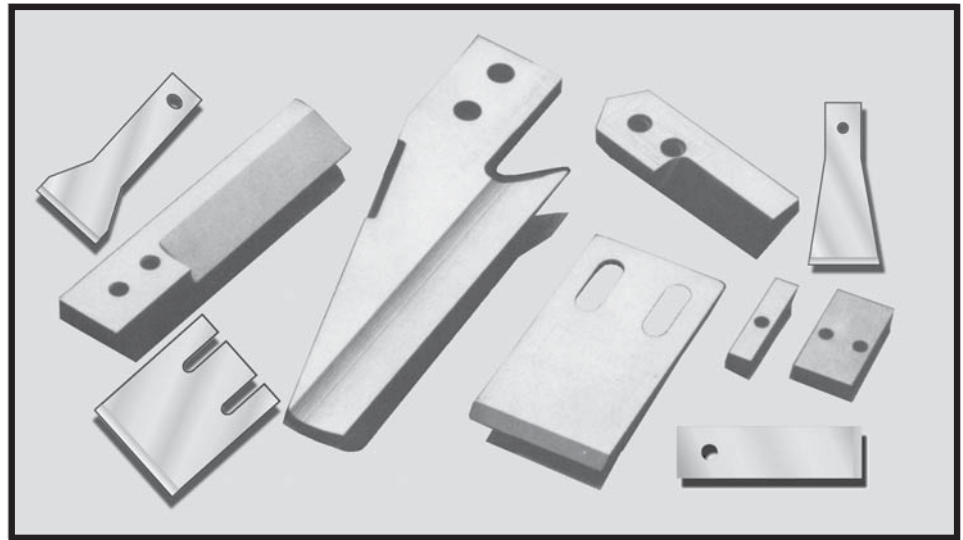
**Blades for Palletizing & Recycling**

**Application**

Palletizing of Plastics

**Standard**

Various as per Machines like Erema, Brengier, etc.



**Material**

AISI - M2 / AISI - D2 / Spring Steel

**Product Type**

**Circular Granulator or Palletizer Blades**

**Application**

Sizing of Plastic Granuals

**Standard**

Various as per the machines with or without Helical teeth

**Material**

AISI - M2 / AISI D2 / SAE 52100



Also available as per customer's specific requirements. Provide your Drawings, Sample or Sketch  
M: +91 9869539577 | E: takai.ishiki.knife@gmail.com

**Products Catalogue**

**Product Type**

**Application**

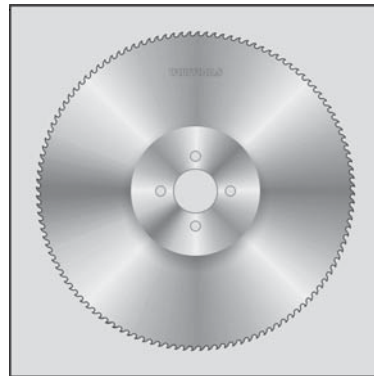
**Standard**

**Saws - HSS or Tungsten Carbide Tipped**

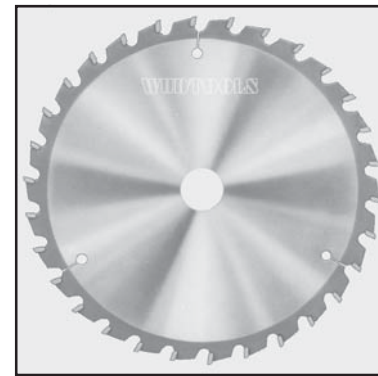
Cutting of PVC Pipes or Tubes or Sheets

For Kolsite Machine windsor etc.

Type	OD	ID	Thick	No. of Teeth
TCT	150	20	4	12
TCT	200	25	4	15
TCT	200	25	2.7	60
TCT	250	25	4	40
TCT	250	40	2.9	80
TCT	350	30	4	56
TCT	350	30	3.2	108
TCT	420	40	3.2	130
TCT	520	30	4	160
HSS	160	32	2.5	300
HSS	180	30	1.5	240
HSS	200	25	2.7	126
HSS	350	30	2.5	350



**HSS Saws**



**TCT Saws**

Also available as per customer's specific requirements. Provide your Drawings, Sample or Sketch

M: +91 9869539577 | E: takai.ishiki.knife@gmail.com

**A WORLD OF EXPERIENCE IN CUTTING TOOLS**

**Products Catalogue**

**Product Type**

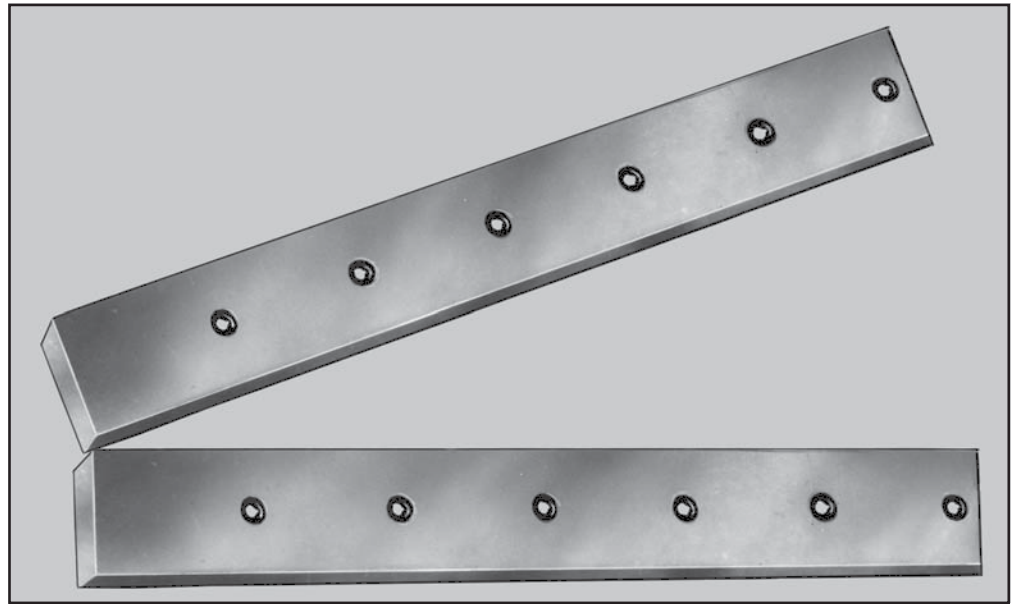
**Shearing Blades**

**Application**

Cutting of Carry Bags & Sheets

**Standard**

Various as per Machines



**Product Type**

**DIE & Punches**

**Application**

For handle cutting of carry bags & SL

**Standard**

Various as per size and type of bag

Also available as per customer's specific requirements. Provide your Drawings, Sample or Sketch  
M: +91 9869539577 | E: takai.ishiki.knife@gmail.com

**A WORLD OF EXPERIENCE IN CUTTING TOOLS**



# TAKAI ISHIKI

## KNIFE AND SAW COMPANY

### WOOD WORKING KNIVES & SAWS



- VENEER PEELING KNIVES
- VENEER SLICER KNIVES
- VENEER CLIPPER KNIVES
- PRESSURE BARS
- PLANNER BLADES
- CHIPPER KNIVES
- FLAKER KNIVES
- TCT SAW BLADES
- BAND SAW BLADES

**Products Catalogue**

**Product Type**

**Veneer Peeling Knives**

**Application**

For Veneer Industries. and Match Industries.

**Standard**

For Czech Peeling Machines, Cremona Machines, Mihoma Machines, Bharat Machines, Ply Machines ISGEC machines are standard. Available with holes and slots, sharpened, ready to use knives. In following sizes:

108" x 7" x 5/8"

56" x 7" x 5/8"

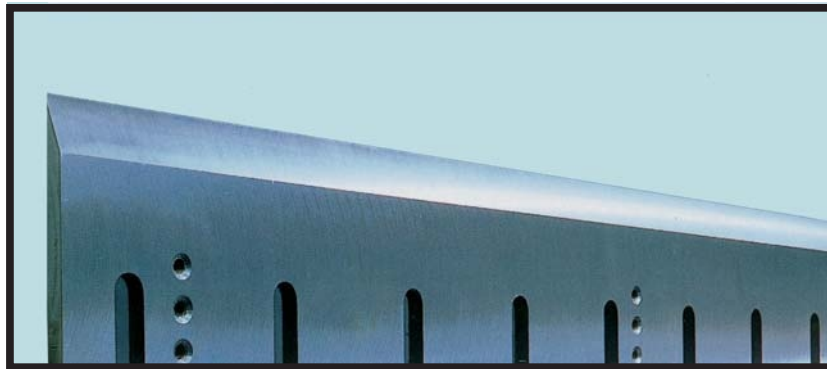
108" x 6" x 5/8"

56" x 6" x 5/8"

**Standard for Match Industries**

Length : 46", 42", 36", 32", 30", 28", 18", 14".

Width : 4", 5", 6".



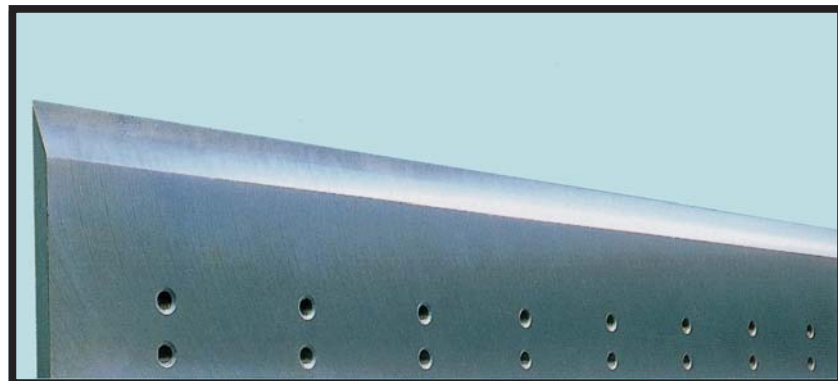
**Material**

Cladded Steel of various grades. With a Steel Portion of 70~72 mm Depending upon width of Peeling Knife.

**Product Type**

**Veneer Clipper Knives**

For all types of Machines as per customer's Specification and drawings.



Also available as per customer's specific requirements. Provide your Drawings, Sample or Sketch

M: +91 9869539577 | E: takai.ishiki.knife@gmail.com

**A WORLD OF EXPERIENCE IN CUTTING TOOLS**



## Products Catalogue

**Product Type**

### Veneer Slicer Knives

**Application**

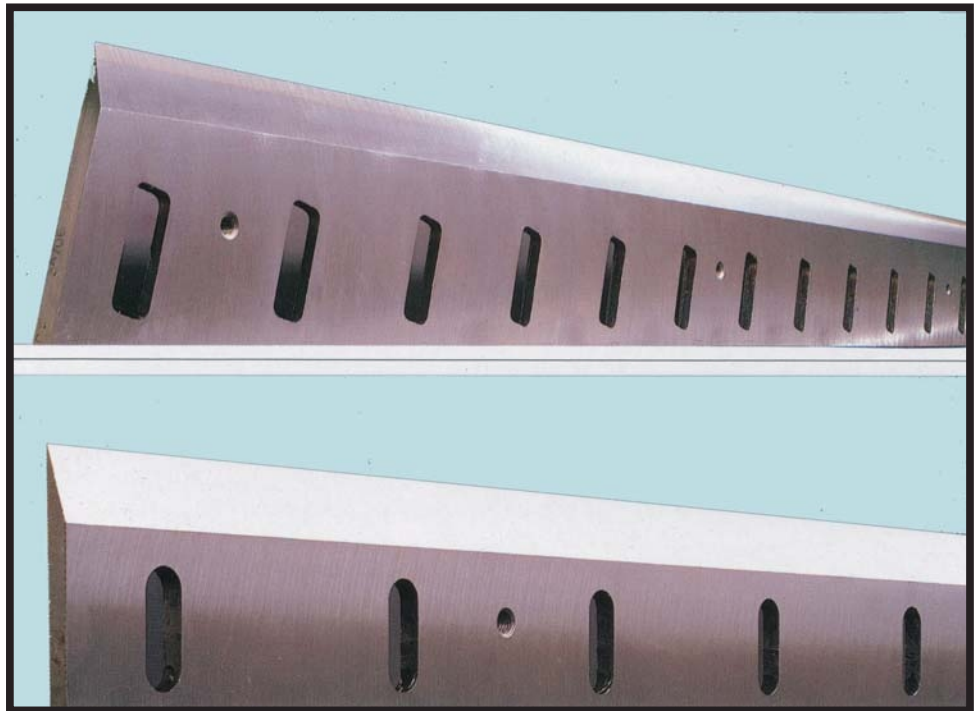
Used in veneer industries for slicing the wood logs.

**Standard**

For Cremona Slicer, Czech Slicer, Tai Hai Slicer and Capital Slicer.

4040 x 265 x 16 mm  
3240 x 260 x 16 mm  
2880 x 260 x 16 mm

4160 x 265 x 3 mm  
3150 x 240 x 16 mm  
2750 x 240 x 16 mm



**Material**

Cladded Steel of various grades.

**Product Type**

### Veneer Pressure Bars

For all the above types of knives made from High grade of steel, Hardened, Tempered, and ground finish.

Also available as per customer's specific requirements. Provide your Drawings, Sample or Sketch  
M: +91 9869539577 | E: takai.ishiki.knife@gmail.com

***A WORLD OF EXPERIENCE IN CUTTING TOOLS***

**Products Catalogue**

**Product Type**

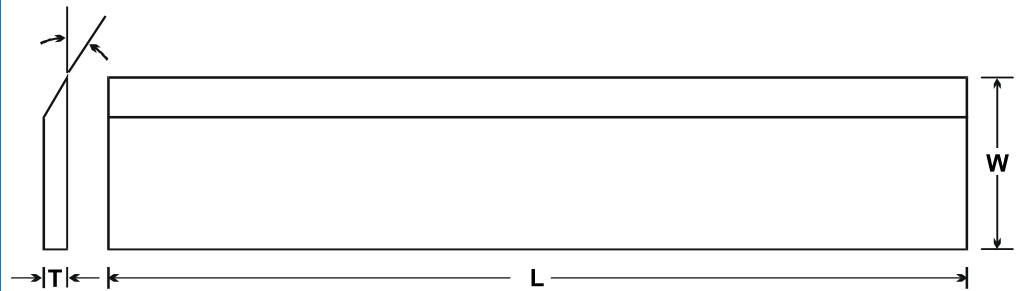
**Wood Planner Knives**

**Application**

Wood Planning

**Standard**

**Standard Lengths** : 6", 9", 10", 12", 14", 16", 18", 20", 24"  
**Standard Widths** : 1" (25 mm), 1.25" (30 mm), 1.5" (38 mm)  
**Standard Thickness** : 1/8" (3 mm).

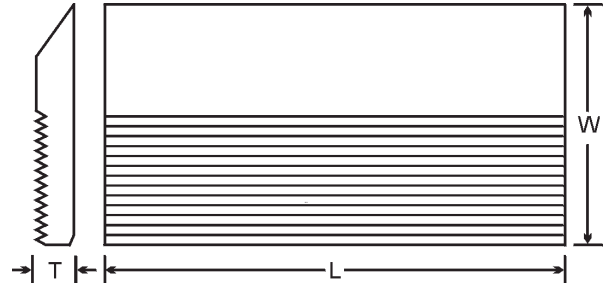


**Material**

AISI-M2 (H.S.S.) / Carbon Steel.

**Serrated Back**

Width	Thick.	Length
30	4	650
35	4	650
40	4	650
40	6	650
40	8	650
45	6	650
45	8	650
50	6	650
50	8	650
55	8	650
60	8	650
65	8	650
70	8	650





**Also available Electrical  
 Planner Blades for :**

- **Hitachi,**
- **Electrax,**
- **Black & Decker,**
- **& Many others.**

Also available as per customer's specific requirements. Provide your Drawings, Sample or Sketch  
 M: +91 9869539577 | E: takai.ishiki.knife@gmail.com

**Products Catalogue**

**Product Type**

**Chipper Knives for Wood & Bamboo**

**Application**

Specially used in particle Board Mills, Chip Boards and Paper pulp Mills.

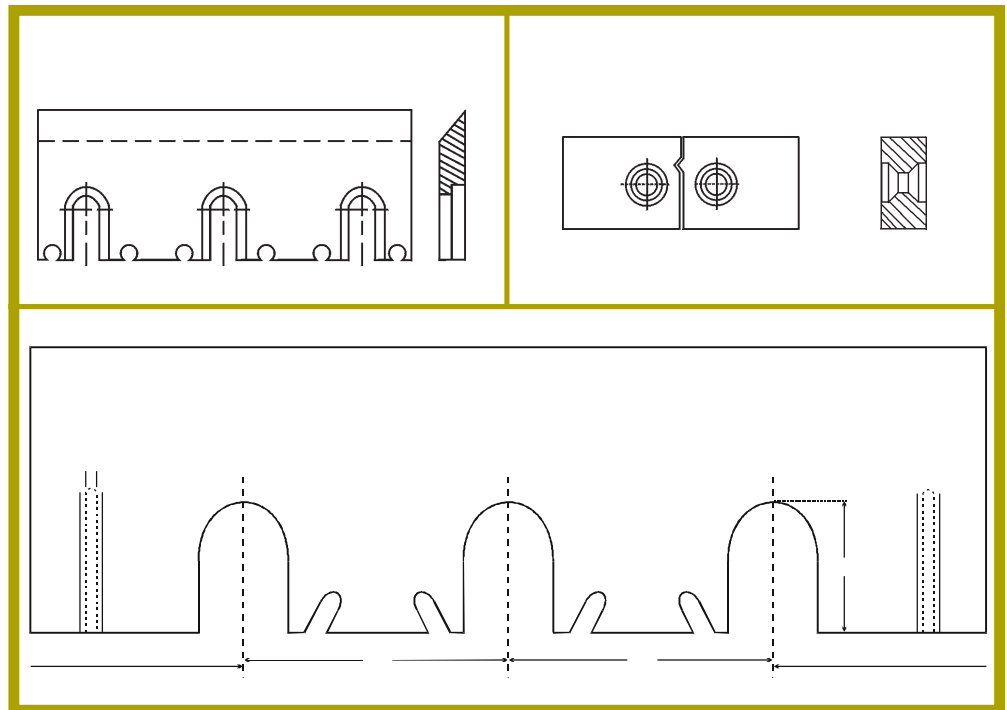
**Standard Machines :** Pallamann, Clockner, Pessa, Windsor, Tata, KMW, Voith, Wigger, L & T & others.

**Standard**

Generally made as per the machine and Model of the Machine.

Various lengths, widths and thicknesses are possible.

Length	125 mm	to	1130 mm
Width	25 mm	to	250 mm
Thickness	6 mm	to	30 mm



**Material**

AISI-A2 / AISI-D2 / HSS

Also available as per customer's specific requirements. Provide your Drawings, Sample or Sketch

M: +91 9869539577 | E: takai.ishiki.knife@gmail.com

**A WORLD OF EXPERIENCE IN CUTTING TOOLS**

**Products Catalogue**

**Product Type**

**Flacker Knives**

**Application**

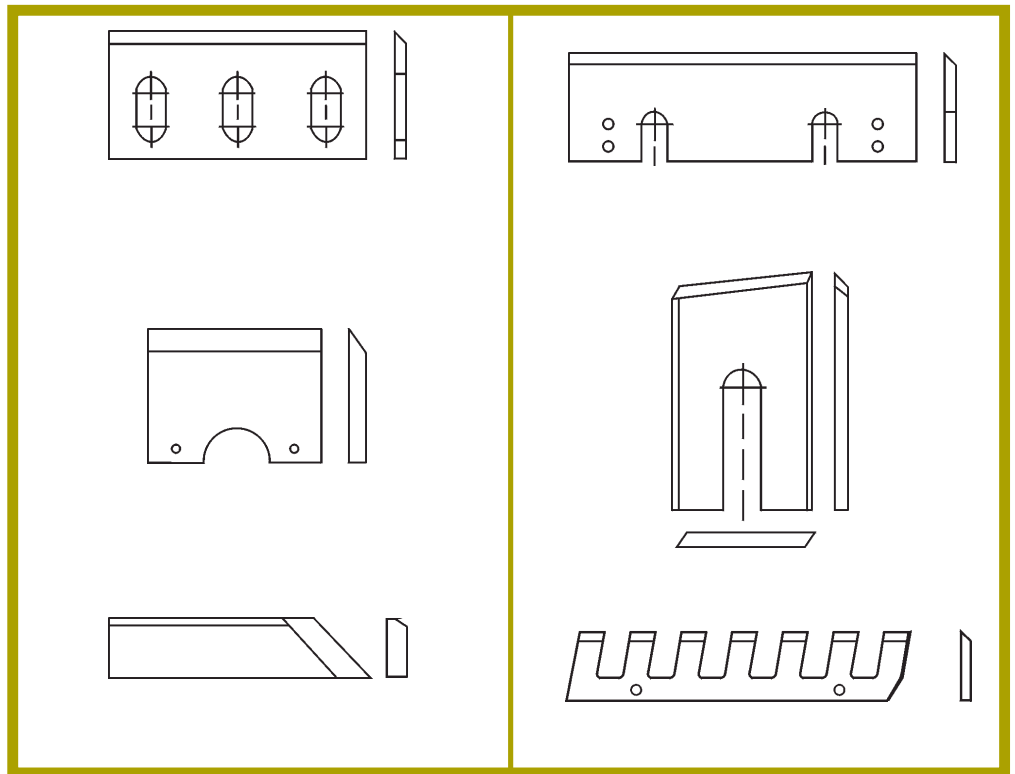
Specially used in particle Board Mills, Chip Boards and Paper pulp Mills.

**Standard Machines :** Pallamann, Clockner, Pessa, Windsor, Tata, KMW, Voith, Wigger, L & T & others.

**Standard**

Generally made as per the machine and Model of the Machine. Various lengths, widths and thicknesses are possible.

Length        125 mm    to    1130 mm  
 Width         25 mm     to    250 mm  
 Thickness     6 mm      to    30 mm



**Material**

AISI-D2 / AISI-A2 / HSS

Also available as per customer's specific requirements. Provide your Drawings, Sample or Sketch  
 M: +91 9869539577 | E: takai.ishiki.knife@gmail.com

**Products Catalogue**

**Product Type**

**Tungsten Carbide Tipped Circular Saws (TCT Saws)**

**Application**

**Rip Saws:** For ripping hard and soft woods like Beech, Pine, Belu etc., in Gang Saws.

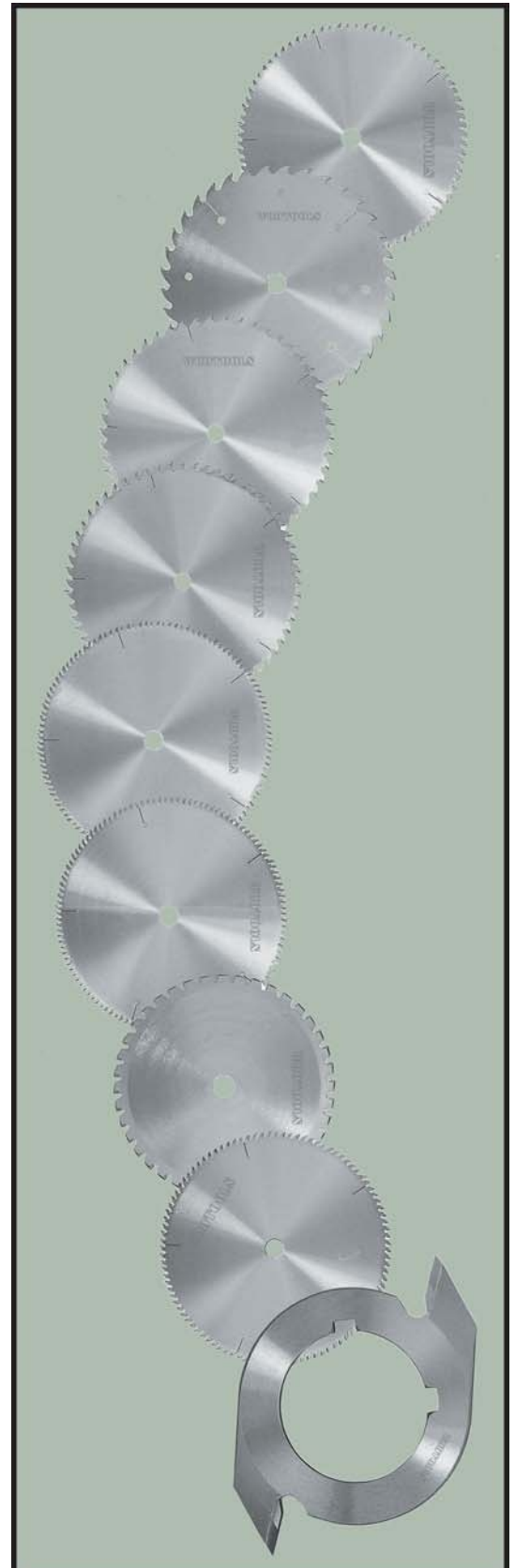
Wudtools today is a market oriented manufacturer using the most modern manufacturing techniques to offer an interesting programme for producing precise cutting tools for Wood Working, Non-Ferrous, Ferrous and Plastics applications. It satisfies the demands of the Industries.

Illustrated here are details of Tungsten Carbide Tipped Saws that are exported world over, made to DIN German stands and produced in our most modern Computer Numerically Controlled (CNC) plant. We produce standard saws as well as special saws for new material and for special burr free cuttings. We are your best source for any application.

**Standard**

Dia	Kerf	No. of Teeth
200	2.0,2.4,2.8,3.2	30,42,48
250	2.0,2.4,2.8,3.2	40,48
300	2.4,2.8,3.2	36,48
350	2.8,3.2	42,54

**Note:** 1. Special Sizes on request.  
2. Bore as required.



Also available as per customer's specific requirements. Provide your Drawings, Sample or Sketch  
M: +91 9869539577 | E: takai.ishiki.knife@gmail.com



**Products Catalogue**

**Tungsten Carbide Tipped Circular Saws (TCT Saws)....Page 2**

**Product Type**

**Cross Cut Saws/DD Saws**

**Application**

For sizing and trimming soft, hard, Exotic Wood, Plywood and Raw Particle Board across the grain.

**Standard**

Dia	Kerf	No.of Teeth
300	2.8,3.2	34,42,48
350	2.8,3.2	54,84,96,108
400	3.2,3.5	60,72,96,108,128
450	3.2,3.5	96,108,128

**Note:** 1. Special Sizes on request, 2. Bore as required.

**Product Type**

**Special Tin Kerf Saws**

**Application**

1. For Exotic Timbers, Solid or Veneered or cutting veneers in packs with grain.
2. For Trimming Exotic Timbers, Solid or veneered across the grain as well as Plastic Sheets and Plywood used in Furniture Manufacturing. A constant feeding speed of the material is recommended.

**Standard**

Dia	Kerf	No.of Teeth
150	1.5,1.7,2.0	24,48
200	1.75,2.0	36,48
250	1.8,2.0	36,40,48

**Note:** 1. Bore as required.

**Product Type**

**Saw Blades for Non-Ferrous Metals and Rigid Plastics.**

**Application**

For use on saw benches, radial arm saws and snipper saws. For sizing cuts in Aluminium Extrusion of up to 10 mm wall thickness as well as Plastic Extrusion. Also used for sizing sheet Aluminium or Plastic. For saw blades where there is a choice of number of teeth for the diameter the following rule applies. The saw with the highest number of teeth are suitable for materials upto 4 mm wall thickness. With thicker material less teeth are required.

In all cases when cutting Aluminium or Rigid Plastic profiles the operator must ensure that the work piece is firmly clamped.

**Standard**

Dia	Kerf	No.of Teeth	Dia	Kerf	No.of Teeth
200	2.8,3.2	48,60	450	4.0,4.4	80,120
250	3.2,3.5	40,60,80	500	4.0	96,120
300	3.2,3.8	72,84,96	550	4.0	52,60,72
350	3.8,4.0	60,84,108	600	4.0	60,72
400	4.2	96,108,128			

**Sizes above 600 Dia upto 1020 mm available on request as per specification.**

**Note:** 1. Special sizes on request, 2. Bore as required.

Also available as per customer's specific requirements. Provide your Drawings, Sample or Sketch  
M: +91 9869539577 | E: takai.ishiki.knife@gmail.com

**Products Catalogue**

**Product Type**

**Wood Working Band Saws**

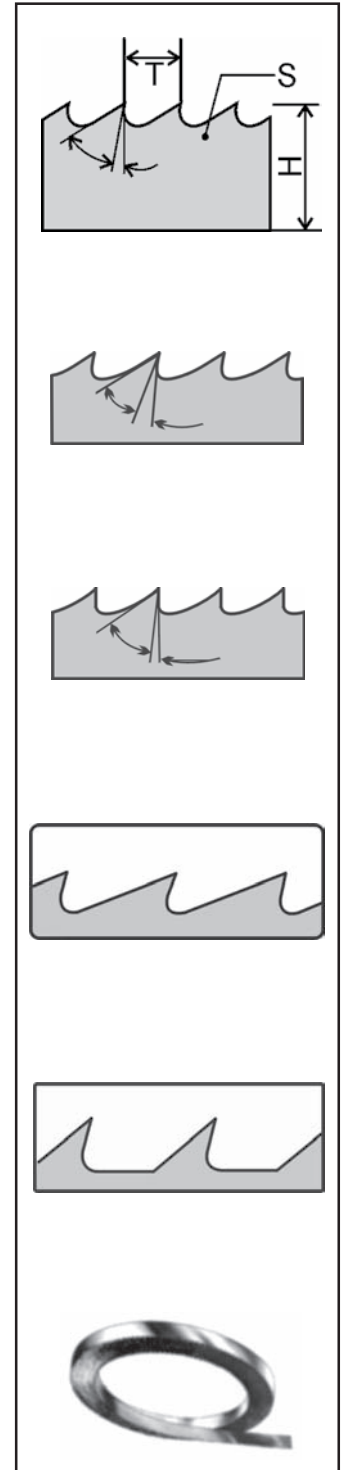
**Application**

Cutting of wood logs.

**Standard**

Height(H) x Thick(S)	Tooth per Inch (T)
1.1/2" x 19 G	With 2 TPI or 3 TPI
1.1/2" x 20 G	With 2 TPI or 3 TPI
2" x 19 G	With 3 TPI
2.1/2" x 19 G	With 3 TPI
3" x 18 G or 19 G	With 3 TPI to 4 TPI
5" x 17 G	With 6 TPI
6" x 17 G	With 6 TPI or 8 TPI
7" x 17 G	With 6 TPI or 8 TPI

Height(H) x Thick(S) (mm)	Tooth per Inch (T)
6 x 0.4	4
6 x 0.5	4
6 x 0.6	5
8 x 0.4	5
8 x 0.5	5
8 x 0.6	6
10 x 0.4	5
10 x 0.5	5
10 x 0.6	6
12 x 0.4	6
12 x 0.6	6
16 x 0.5	6
16 x 0.6	6
20 x 0.4	6
20 x 0.5	6
20 x 0.7	8
25 x 0.4	6
25 x 0.5	6
25 x 0.7	8-9
30 x 0.75	9
35 x 0.8	10
40 x 0.8	10



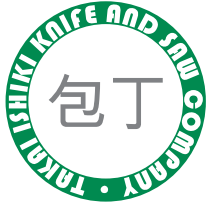
**Material**

Carbon Steel

Also available as per customer's specific requirements. Provide your Drawings, Sample or Sketch

M: +91 9869539577 | E: takai.ishiki.knife@gmail.com

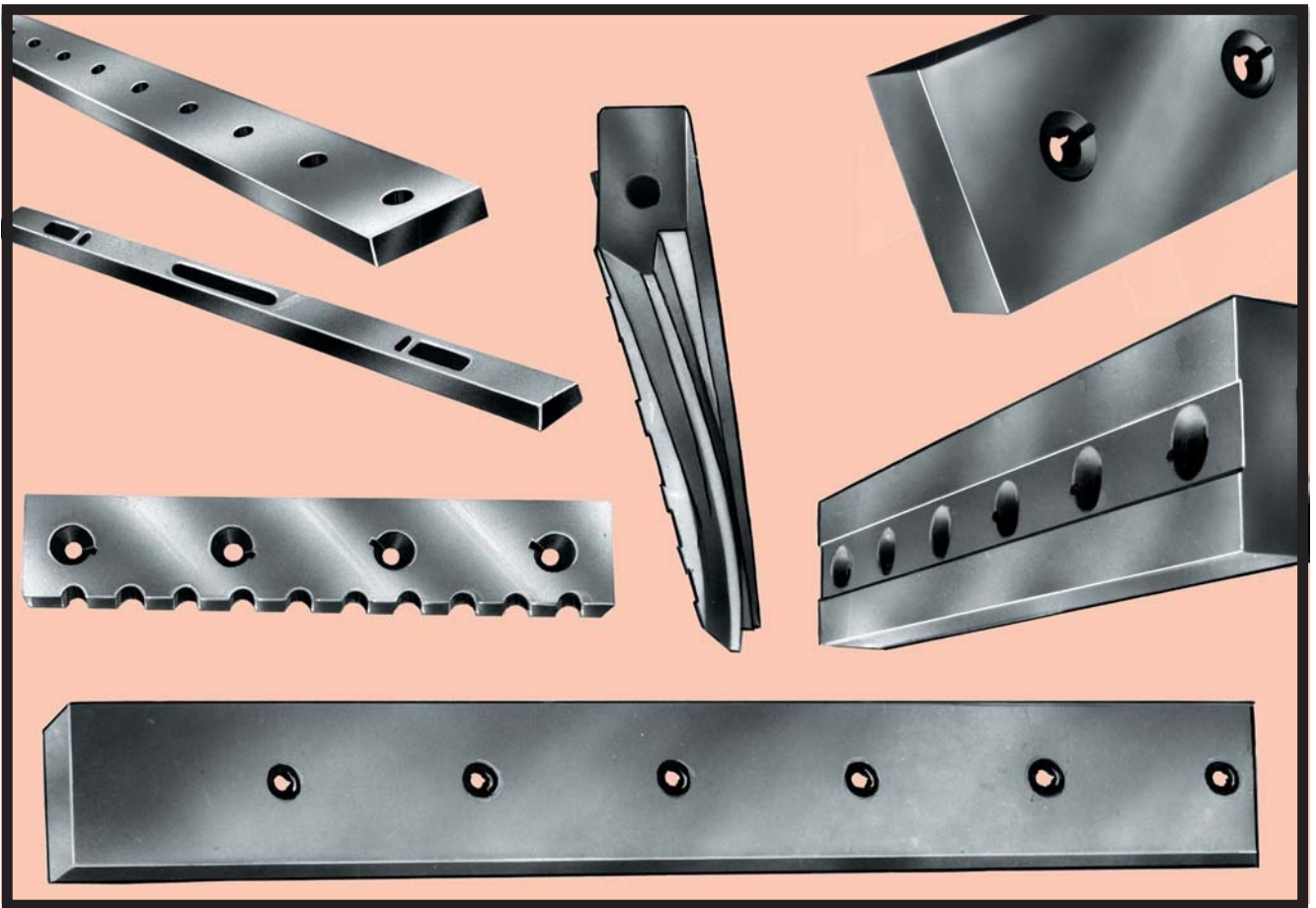
**A WORLD OF EXPERIENCE IN CUTTING TOOLS**



# TAKAI ISHIKI

## KNIFE AND SAW COMPANY

KNIVES FOR STEEL MILLS &  
SHEET METAL INDUSTRIES FOR STEEL MILLS.



- SHEARING BLADES
- ROTARY SHEAR BLADES
- SPACERS
- FINS
- HSS CUT OFF SAWS
- TUBE CUTTER
- TUBE PARTING OFF BLADES

## Products Catalogue

**Product Type**

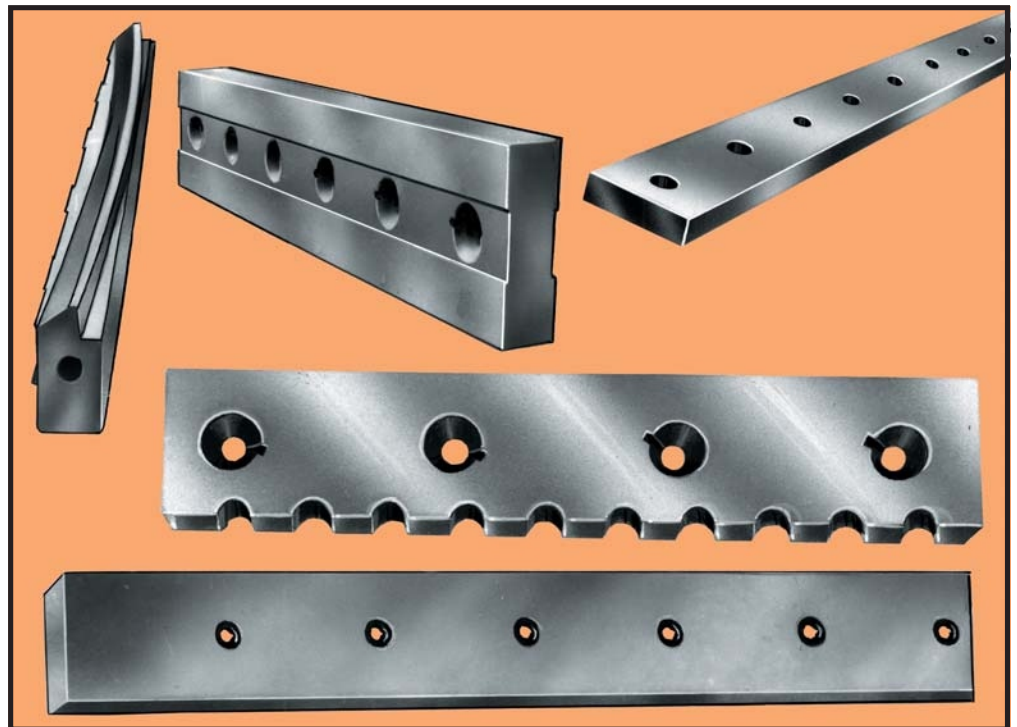
### Shearing Blades

**Application**

For shearing sheets up to & including 6 mm mild steel (63,000 PSI) or its equivalent in tensile strength.

**Standard**

Various sizes as per the drawing of the customers. We make Shear Blades and other Straight Knives upto 4000 mm or 160 inches long to meet every application.



**Material**

AISI-D2 / AISI-S1 or as per the requirement.

Made from a special analysis high carbon high chrome tool steel. Custom made to fit specific requirements to assure maximum cutting life. Exclusive WUDTOOLS heat treating methods, using automatic electrically controlled furnaces, impart uniform hardness throughout the blade. In production shearing, this uniformity of metallurgical structure provides keen cutting services life well beyond that of ordinary blades. But most important reasons for a good shear blade are to be found in the way they are made.

Also available as per customer's specific requirements. Provide your Drawings, Sample or Sketch  
M: +91 9869539577 | E: takai.ishiki.knife@gmail.com

**A WORLD OF EXPERIENCE IN CUTTING TOOLS**

## Products Catalogue

**Product Type**

### Rotary Shear Knives (Slitting Cutters) for Metal Slitting & Trimming

**Application**

To slit or trim any metal-mild steel, galvanized strips, stainless steel, silicon, tin plate, brass, copper or aluminium - you can rely on WUDTOOLS Slitter and Trimmer Knives to do a better job at lowest possible cost. Our range includes Alloy Steel, HSS and Carbide Knives.



**Material**

AISI - D2 / HSS / Carbide Tipped

Made from a special analysis high carbon high chrome tool steel. Custom made to fit specific requirements to assure maximum cutting life. Exclusive WUDTOOLS heat treating methods, using automatic electrically controlled furnaces, impart uniform hardness throughout the blade. In production shearing, this uniformity of metallurgical structure provides keen cutting services life well beyond that of ordinary blades. But most important reasons for a good shear blade are to be found in the way they are made.

**Product Type**

### Fins & Spacers

**Application**

Used with Slitting Cutters on Slitting lines for getting correct slit width.

Hardened & tempered to withstand stains & maintain all dimensions.

Tolerance in thickness & parallelism are as per customer's requirements.

**Material**

Alloy Steel



Also available as per customer's specific requirements. Provide your Drawings, Sample or Sketch  
M: +91 9869539577 | E: takai.ishiki.knife@gmail.com



**Products Catalogue**

**Product Type**

**Tin Slitting Cutter**

**Application**

Slitting of very thin Metal Strips, which requires clean cut-Burr free, long runs between grinds.

Carbide Knives are recommended for silicon gang slitters, slide trimmers and rotary shears for tough materials where steel knives blunt off early or produce unsatisfactory results.

As per the requirements of Customer.

**Standard**

AISI - D2 / HSS / Tungsten Carbide Inlaid.

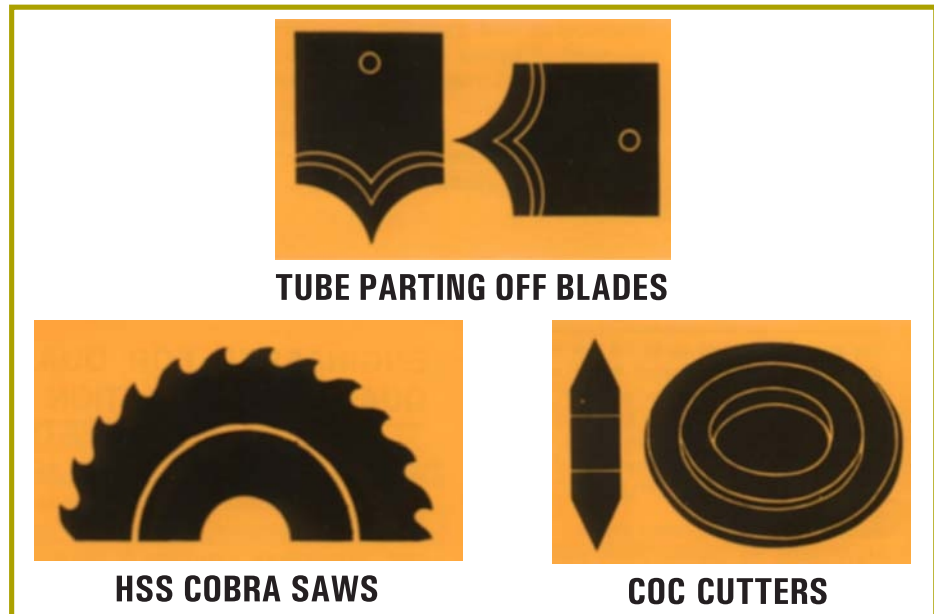


**Product Type**

**Knives & Saws used in Tube Making Industries**

**Standard**

Various sizes are made as per the drawing of the customers.



**TUBE PARTING OFF BLADES**

**HSS COBRA SAWS**

**COC CUTTERS**

Also available as per customer's specific requirements. Provide your Drawings, Sample or Sketch  
M: +91 9869539577 | E: takai.ishiki.knife@gmail.com

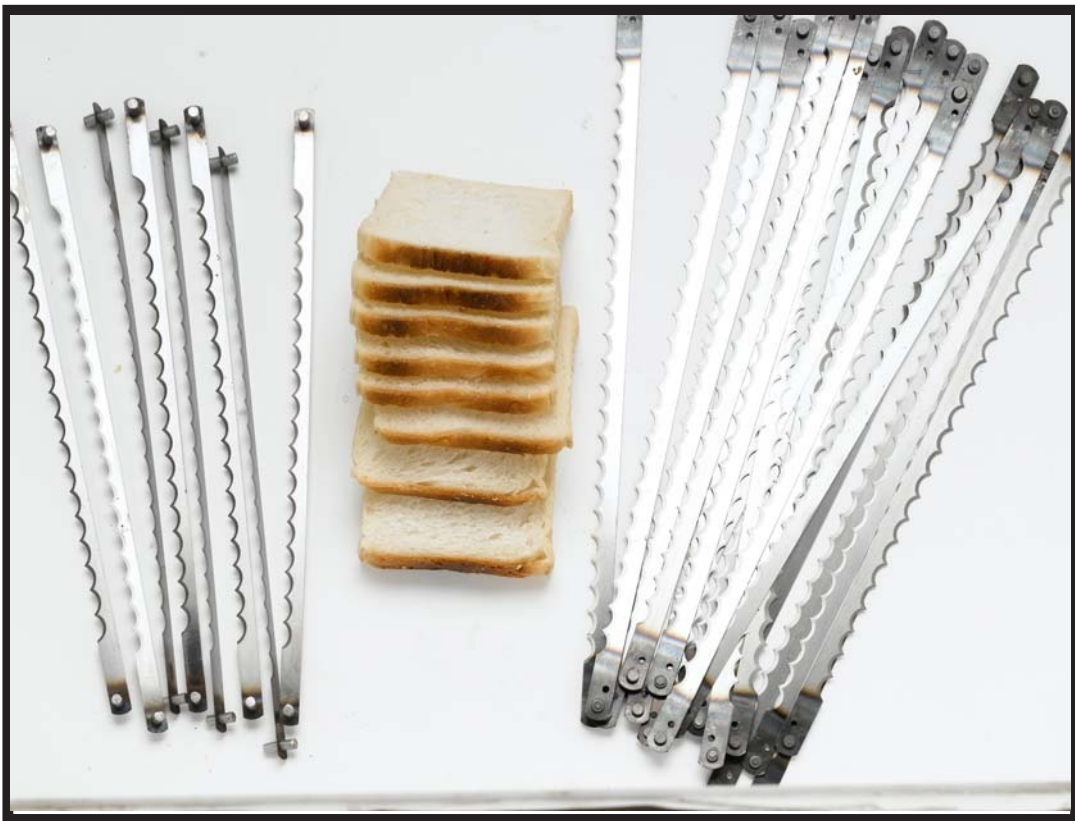
**A WORLD OF EXPERIENCE IN CUTTING TOOLS**



# TAKAI ISHIKI KNIFE AND SAW COMPANY

## BREAD SLICER KNIVES

RECIPROCATING TYPE  
CONTINUOUS LENGTH TYPE



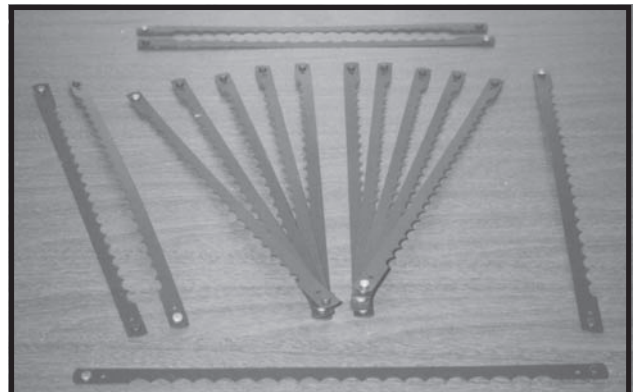
### *Description*

Bread Slicer Knives used for slicing of Breads.

Available in two types -

1. Reciprocating Type and
2. Endless type.

All blades are precision ground on bevels and are made as per the requirements of different machines. Reciprocating type is available with holes, pins or rivets at both ends. It can also be custom made.



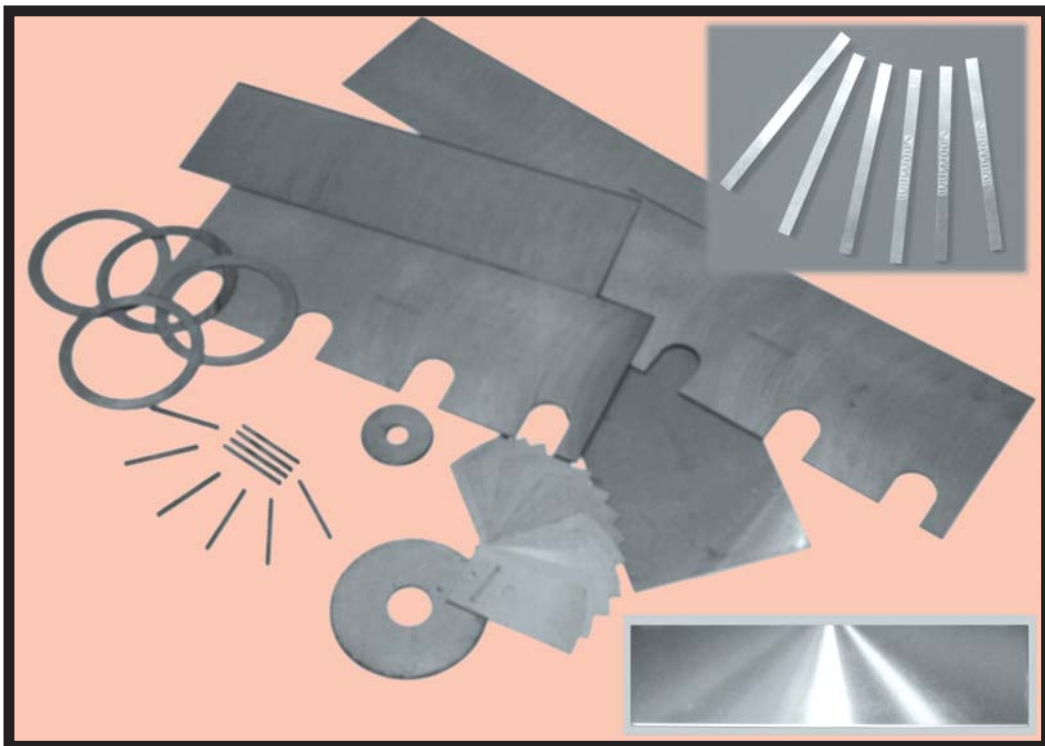
**FOOD GRADE TEFLON COATED BLADES ARE ALSO AVAILABLE.**



# TAKAI ISHIKI

## KNIFE AND SAW COMPANY

### TOBACCO CUTTING KNIVES



- CARBIDES KNIVES FOR PAPER CUTTING
- FIX & ROTATING KNIVES
- MOVING & STATIONERY KNIVES
- LABEL KNIVES
- U KNIVES
- TUNGSTEN CARBIDE CORK KNIVES
- BOTTOM KNIVES
- GUILLOTINE UPPER AND LOWER BLADES
- MRTC KNIVES
- HAUNI KNIVES - & MILI KNIVES
- WAFER KNIVES
- FILTER CUTTING KNIVES
- RIPPER KNIVES
- FOIL SLITTER KNIVES
- PLUG CUTTING KNIVES
- CREASING & CUTTING KNIVES & ANVILS
- LEAF & STEAM CUTTING KNIVES

Many other standard knives for machines like Hauni, GD, Mollins, etc. can be available to the requirement of customers



# TAKAI ISHIKI

## KNIFE AND SAW COMPANY

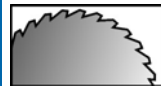
### METAL CUTTING HSS CIRCULAR SAW BLADES



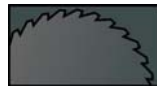
#### Application

High precision special saw available for precision grooving, Slotting & Sawing applications. Also extra high tolerances on run-out and parallelism available on request.

#### Coatings



Normal



Special OV



Goldface



Speedface



Lastface



Bestface



Blackface



Silverface

#### Tooth Profiles



**Tooth A**  
fine teeth "DIN 1837"



**Tooth B**  
with chip breaker



**Tooth B**  
coarse teeth "DIN 1838"



**Tooth BW**  
coarse teeth "DIN 1838"  
with teeth bevelled alternately



**Tooth AW**  
fine teeth "DIN 1837 with teeth  
bevelled alternately



**Tooth C**  
coarse teeth with roughing tooth bevelled on  
both sides and finishing tooth not bevelled.  
The roughing tooth is about 0.2 mm higher

Various surface coatings & tooth profiles available to cut a variety of materials like :

Stainless Steel, Grey Cast Iron, Heat Treated Steels, Extra Hard Steels & Special Saws to cut Aluminium, Phosphor Bronze, Titanium Alloys, Copper, Hard Bronze, etc.

Vacuum Heat Treated & CNC ground, flatness & Run-out according to DIN 1840, UNI 4012 standards.

#### Material

AISI M2 (HSS) / AISI M35 (HSS)

**Products Catalogue**

**Product Type**

**Metal Cutting Circular Saw Blades**

THICKNESS							Ø DIA.	TOOTH PITCH/NUMBER OF TEETH/TOOTH FORM											
								T3	T4	T5	T6	T7	T8	T9	T10	T11	T12	T14	T16
--	--	-	-	1.2	1.5	2	175	180 BW	140 BW	110 C	90 C	--	70 C	--	---	--	--	--	--
--	--	1.2	1.5	1.8	2	2.5	200	200 BW	160 BW	130 C	100 C	--	80 C	--	60 C	--	--	--	--
--	--	-	-	-	-	2	210	210 BW	160 BW	--	110 C	--	80 C	--	--	--	--	--	--
1.2	1.5	1.6	1.8	1.9	2	2.5	225	220 BW	180 BW	140 C	120 C	--	90 C	80 C	--	--	--	--	--
--	1.2	1.5	1.6	2	2.5	3	250	250 BW	200 BW	160 C	128 C	110 C	100 C	--	80 C	--	60 C	--	--
--	-	-	1.6	2	2.5	3	275	280 BW	220 BW	180 C	140 C	140 C	110 C	--	90 C	--	--	--	--
--	-	-	1.6	2	2.5	3	300	300 BW	220 BW	180 C	160 C	140 C	120 C	--	94 C	--	--	--	--
--	-	-	-	2	2.5	3	315	300 BW	240 BW	200 C	160 C	--	120 C	--	100 C	--	80 C	70 C	--
--	--	-	-	-	2.5	3	325	320 BW	250 BW	200 C	170 C	--	128 C	--	--	--	--	--	--
--	-	-	2	2.5	3	3.5	350	350 BW	280 BW	220 C	180 C	160 C	140 C	120 C	110 C	--	90 C	80 C	--
--	-	-	-	2.5	3	3.5	370	--	280 BW	220 C	190 C	160 C	140 C	120 C	110 C	--	100 C	80 C	70 C
--	-	-	2.5	3	3.5	4	400	--	310 BW	---	200 C	--	160 C	--	120 C	110 C	100 C	--	80 C
--	-	-	-	3	3.5	4	425	--	320 BW	---	220 C	--	160 C	--	130 C	--	110 C	--	80 C
--	-	-	-	3	4	5	450	--	350 BW	---	230 C	--	180 C	--	140 C	--	120 C	--	90 C
--	-	-	-	-	4	5	500	--	--	310 C	260 C	--	200 C	--	160 C	--	130 C	--	100 C
--	--	-	-	-	4	5	550	--	440 BW	340 C	280 C	--	220 C	--	170 C	--	140 C	--	--
--	--	-	-	-	4	5	600	--	460 BW	380 C	320 C	--	240 C	--	190 C	--	160 C	--	--

□ BORE	DRIVING HOLES
□ 32	2.8.45
	2.9.50
	2.11.63
□ 38	2.9.55
□ 40	2.8.55
	4.12.64
	2.15.80
□ 45	2.11.66
	4.11.66
□ 50	4.15.80
	4.14.85

**SURFACE COATINGS**

COATINGS	SURFACE HARDNESS	OXIDATION TEMP. (°C)	FRICTION COEFFICIENT	CUTTING SPEED & FEED RATE IN %	APPLICATION
NORMAL	800	450	0.7	90	Aluminium, Bronze, Copper, Brass
NITRIDED	900	450	0.65	100	ERW Precision, Steel Tubes & Pipes, Solids.
GOLDFACE	2200-2400	520	0.55	150	Medium Alloy Steel, hard steel, furniture pipe and profile
SPEEDFACE	3000-3300	480	0.35	200	Hard steel, Stainless steel, Titanium and Avional alloys.
LASTFACE	2400-2800	800	0.55	200	Any section of Stainless Steel.
BESTFACE	2500-2900	650	0.4	150	Copper, Bronze, Brass, Aluminium and their alloys.
BLACKFACE	3300-3500	875	0.45	200	Hard Steel, Stainless Steel, Cast Iron.
SILVERFACE	1100-1200	450	0.4	110	Stainless Steel, Aluminium alloys (max thick 1.5 m)

Also available as per customer's specific requirements. Provide your Drawings, Sample or Sketch  
M: +91 9869539577 | E: takai.ishiki.knife@gmail.com

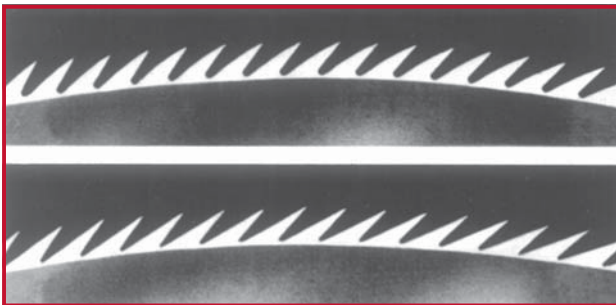




# TAKAI ISHIKI

## KNIFE AND SAW COMPANY

### GINNING SAWS



Tooth Profile



## Products Catalogue

**Product Type**

### Ginning Saws

Made from the highest quality of steel. Specially developed for Gin Saws. Extremely long service life. Manufactured by experienced specialists.

**Application**

Cotton Ginning

**Standard**

Name of Ginning Machine	Ø	Bore Ø	Thickness	Ginning Standard	Original No.	App. wt. Grams
<b>MURRAY</b>	12"	2.7/16"	0.037"	80/90	X 912	500
	12"	2.7/16"	0.045"	80/90		610
	12"	3.7/16"	0.037"	120		480
	12"	3.7/16"	0.045"	120		590
	18"	3.7/16"				1400
	18"	7.15/16"				1200
<b>Continental / C / MG</b>	12"	2.7/16"		80/90		500
	12"	2.15/16"		Center Saw		490
	12"	3.15/16"		120		460
	16"	6.7/8"		79/119/141		770
<b>Moss-Gordin / C / MG</b>	14"	3.7/16"				710
	16"	5.7/8"		98 & 2 No. 125	BG 518	880
	16"	8.3/8"			BG 512	720
<b>Lummus (and Platt Lummus)</b>	12"	2.7/16"		80/88/90		490
	12"	3.7/16"		128		470
	12"	4.3/4"		158		430
<b>Platt (Murray System)</b>	12"	2.7/16"				510
<b>Hardwicke-etter</b>	12"	2.7/16"		80/90/100		510
	11.1/4"	2.7/16"				450
	11.1/4"	3.7/16"				430
	12"	3.7/16"		120		490
<b>Cen-Tennial</b>	12"	2.7/16"		80/90		500
	12"	3.7/16"		120		480
<b>Others</b>	8"					240
	9"					300
	10"					380
	1.2/12					550

Also available as per customer's specific requirements. Provide your Drawings, Sample or Sketch  
M: +91 9869539577 | E: takai.ishiki.knife@gmail.com

**A WORLD OF EXPERIENCE IN CUTTING TOOLS**

## Products Catalogue

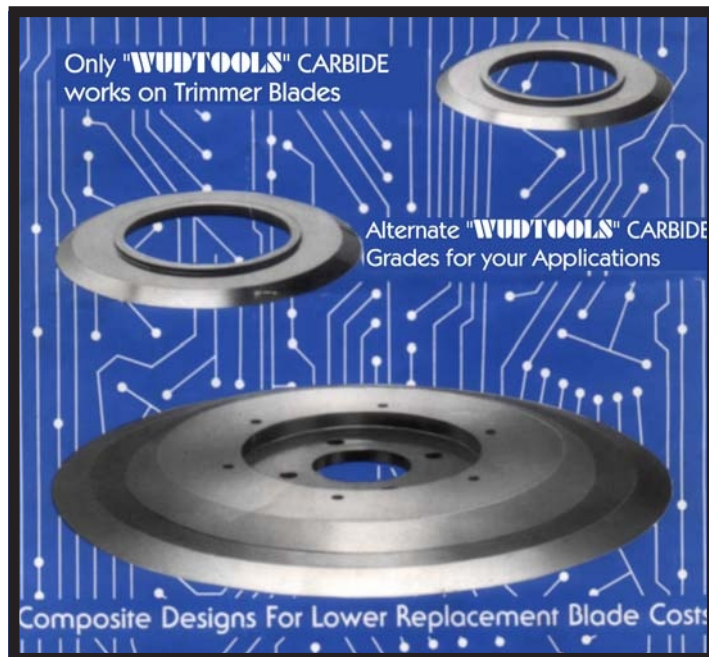
**Product Type**

### Tungsten Carbide Lead Wire Trimmer Blades

Only **Wudtools** provides Carbide Blades for every machine, every application. **Wudtools** controls all manufacturing operations from the pressing of tungsten carbide powders to the finish grinding of each blade. Our integrated capability means superior quality and trimmer blade productivity for the customer.

**Application**

Cutting of Lead Wire of PCB's.



**Knife Design**

**Wudtools** offers alternative knife designs consisting of both solid and composite constructions.

When applicable the composite knife design has the advantages of greater strength and lower replacement blade cost. On all **Wudtools** designs, we maintain the critical blade tolerances necessary for accurate trimming and extended blade life.



**Material**

Tungsten Carbide.

Also available as per customer's specific requirements. Provide your Drawings, Sample or Sketch  
M: +91 9869539577 | E: takai.ishiki.knife@gmail.com

**Products Catalogue**

**Product Type**

**High Precision Solid Carbide Balls**

**Applications**

For Ballizing, Bearings, Ball Screws, Valves, Meters, Pumps, Styli Tips. Spray guns, Measuring Spline Gears.



**Standard**

**AFBMA Tolerances in Microinches and Micrometers**

Grade	Allowable Diameter High	Nominal Deviation Low	Allowable Lot Dia. Variation	Allowable Ball Dia. Variation	Deviation from Spherical Form	Max. Surface Roughness Ra.
3	+ 30 (0.75)	-30 (0.75)	5 (0.13)	3 (0.08)	3 (0.08)	0.5 (0.012)
5	+ 50 (1.25)	-40 (1.0)	10 (0.25)	5 (0.13)	5 (0.13)	0.8 (0.02)
10	+50 (1.25)	-40 (1.0)	20 (0.5)	10 (0.25)	10 (0.25)	1 (0.025)
25	+ 100 (2.5)	-100 (2.5)	50 (1.25)	25 (0.64)	25 (0.64)	2 (0.05)

**Also Available :**

Made to size Balls with very high precision in Ceramics, Silicon Nitride (Si<sub>3</sub>NU), Stainless Steel, Chrome Steel, Phosphor Bronze.



Also available as per customer's specific requirements. Provide your Drawings, Sample or Sketch  
M: +91 9869539577 | E: takai.ishiki.knife@gmail.com

## ***Our Products at a Glance - Listed Industry Wise for EXPORTS***

### ***A. Tyre Industries:***

1. Bias Cutter,
2. Vent Trimming Knives,
3. Tread Cutters, Auto Skiver Blades,
4. Scoring/Slitting Knives,
5. Mill Knives - Straight & Round,
6. Steel Cord Knives.

### ***B. Wood Working Industries:***

1. Peeling Knives for Plywood Mills,
2. Jointer Knives,
3. Pressure Bars,
4. Tungsten Carbide Tipped Saws,
5. Slicer Knives,
6. Clipper Knives,
7. Band Saw Blades upto 6" width.

### ***C. Cigarette & Tobacco Industry:***

1. MRTC Knives,
2. Hauni Knives - & MILI Knives,
3. Wafer Knives,
4. Filter Cutting Knives,
5. Ripper Knives,
6. Foil Slitter Knives,
7. Plug cutting Knives,
8. Creasing & Cutting Knives and Anvils,
9. Leaf & Steam Cutting Knives,
10. Carbides Knives for Paper Cutting.

### ***D. Match Stick Manufacturing Industries:***

1. Peeling Knives,
2. Chopping Knives,
3. Lancets (Choping, Angular, etc.),
4. Creasing & Cutting Knives and Anvils,
5. Circular Slitting Knives for Match Box.

### ***E. Paper Converting Industries:***

1. Circular Slitter Knives, (Top cutters, Bottom Cutters & Holders for Top Cutters),
2. Crush Cutter Knives and pneumatic holders
3. Core Cutters,
4. Razor Type Knives,
5. Sheeter Knives,
6. Paper Cutting Knives,
7. Doctor Blades
8. Web press serrated knives.

### ***F. Paper and Pulp Industries:***

1. Chipper Knives (Fly and Dead),
2. Sheet Cutting Knives,
3. Guillotine Knives (Paper Cutting Knives),
4. Top Cutters - Bottom Cutters
5. Doctor Blades.

### ***G. Cotton Industries:***

1. Ginning Saws,
2. Linter Saws.

### ***H. Asbestos Sheet Making Industries:***

1. Circular Knives for Asbestos Sheet Cutting in wet conditions - Material of Construction - Alloy Steel or Carbide Segmented.

### ***I. Recycling Industries:***

1. Granulator Knives (Rotor and Stator Type),
2. Scrap Cutting Knives,
3. Tungsten Carbide Tipped Saws,
4. Friction Saws,
5. Rotary Cutter for Granules.

### ***J. Leather Industries:***

1. Strap Cutting Knives,
2. All types of Straight and circular Knives,
3. Splitting Knives,
4. Band Knives.

### ***K. Polyester Fibre Industries:***

1. Lummus Blades.

### ***L. Food Industries:***

1. Circular Slicing Knives,
2. Chopping Knives,
3. Other Special Knives from Stainless Steel.

### ***M. Clothing Industries:***

1. Circular Knives,
2. Codoroy Cutting Blade Set,
3. Plush Cutting Blade fro Velvet Industries.

### ***N. Metal Industries-Steel Plant & Rolling Mills:***

1. Shearing Blades upto 4 meter long,
2. Circular Rotary Knives for Slitting,
3. Fins & Spacers,
4. HSS Cobra Saws
5. Tube parting of Blades & C.O.C. Cutters
6. Carbide Tipped Slitting Saws for Grooving, Milling and Slotting,
7. H.S.S. Metal Slitting Saws,
8. H.S.S. & Carbide Small Tools like Drills Endmills, Side and Face Cutter and Similar other Tools.

### ***O. Standard Tools:***

1. HSS Ground Square and Ground Tool Bits,
2. Flat/Rectangular and Parting Tool Bits,
3. Twist Drills,
4. Wood Working Drills,
5. Masonry Drills,
6. Hole Saws.

**ALSO AVAILABLE AS PER CUSTOMER'S SPECIFIC REQUIREMENTS. PROVIDE YOUR DRAWINGS, SAMPLE OR SKETCH**

*Exported by :*

**TAKAI ISHIKI  
KNIFE AND SAW COMPANY**



---

Gala No.5, Patel Industrial Estate No.2, Near Fire Brigade, Navghar, Vasai East 401208.  
M: +91 9869539577 | E: takai.ishiki.knife@gmail.com